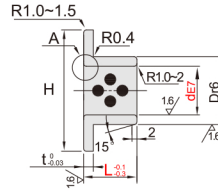
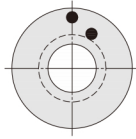


铜合金止推式无油衬套 ◀ 标准型/锥孔型/沉孔型

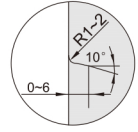


代码	类型	材质	内径公差	外径公差
FDK01	止推式	标准型	E7	r6
FDK02		锥孔型	F7	m6
FDK03		沉孔型		

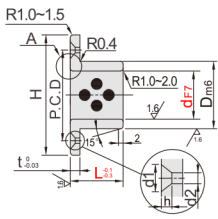
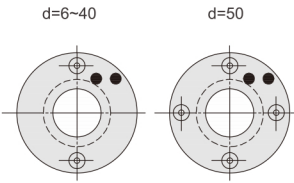
FDK01 标准型



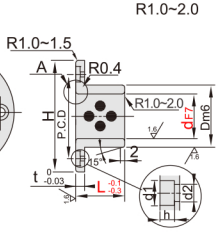
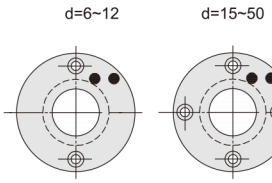
A部详图



FDK02 锥孔型



FDK03 沉孔型



型式		L						D _{m6}		H	t	
代码	d _{E7}	10	12	15	16	20	25	30	12	22		
标准型 FDK01	6	+0.032	10	12	15	16	20	25	30	12		
	8	+0.020	10	12	15				14	+0.034 +0.023		
	10	+0.040	10	12	15	20		16	25			
	12	+0.025	10	12	15	20	25		18	30		
	13		12	15	20	25		19	30			
	15	+0.050	12	15	20	25		21	35			
	16	+0.032	12	15	20	25	30		22	+0.041 +0.028		
	18		14	20	25	30	35		24		40	
	20		14	20	25	30	35	40	28	45		
	25	+0.061	14	20	25	30	35	40	33	50		
	30	+0.040	20	25	30	35	40		38		55	
	35		20	25	30	35	40		44		65	
	40	+0.075	25	30	35	40	45	50	50	+0.050 +0.034	70	7
	50	+0.050	30	35	40	45	50	60	62	+0.060 +0.041	90	8

型号		FDK02						FDK03																	
代码	d _{F7}	L				D _{m6}		安装孔				t	安装孔				附件 短头内六角 圆柱头螺钉	t							
		10	12	15	20	H	P.C.D.	d ₁	d ₂	h	平头 螺栓		H	P.C.D.	d ₁	d ₂			h						
锥孔型 FDK02	6	+0.022 +0.010	10	12			10	+0.015 +0.006	25	15					25	17									
	8	+0.028 +0.013	12	15			12	+0.018 +0.007	28	18					27	19	6	3.5	2.2	M3-10×2个	4				
	10		12	15	20		14		30	20	5.5	3.5	2.5	M3	3	29	21								
	12		12	15	20		18		40	28					36	26					M4-12×2个				
	15	+0.034 +0.016	12	15	20		21								39	29	7.5	4.5	3			5			
	16		12	15	20	25	30	22	+0.021 +0.008	50	35				40	30						M4-12×4个			
沉孔型 FDK03	18		20	25	30		24							42	32										
	20		20	25	30	35	40	28						49	38	9	5.5	3.7				6			
	25	+0.041 +0.020	20	25	30	35	40	33			13	6	3.5	M5	5	54	43					M5-16×4个	6		
	30		20	25	30	35	40	38	+0.025 +0.009	60	45				63	50	11	6.6	4.2				8		
	35		20	25	30	35	40	44		70	52			69	56								M6-20×4个	8	
	40	+0.050 +0.025	25	30	35	40	45	50		80	60				82	66								M8-25×4个	10
	50		30	35	40	45		62	+0.030 +0.011	100	75	16	7	4.5	M6	7	82	66							
												8	94	78											



FDK01-d6-L12

型号			L
代码	d _{F7}		
FDK01	6	+0.022 +0.010	10 12

请按图示订货



交期Delivery

4天 发货

○本产品发货时间不含周日