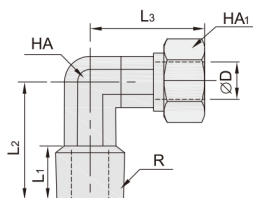
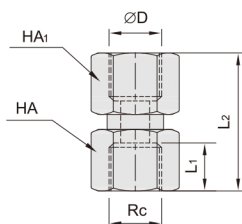


DCE21-CKL 卡套L型螺纹弯头



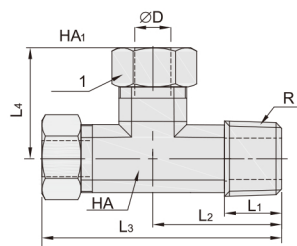
型号	ΦD	R	L ₁	L ₂	L ₃	HA ₁	HA	
DCE21-CKL04-01	4	R1/8	7.5	15.5	18.5	7	10	
DCE21-CKL04-02		R1/4	9.5	19				
DCE21-CKL06-01	6	R1/8	7.5	16	20.5	10	12	
DCE21-CKL06-02		R1/4	9.5	19				
DCE21-CKL06-03		R3/8	10.5	22.5				12
DCE21-CKL08-01	8	R1/8	7.5	16	22.5	10	14	
DCE21-CKL08-02		R1/4	9.5	19				
DCE21-CKL08-03		R3/8	10.5	22.5				12
DCE21-CKL08-04		R1/2	13.5	27.5				26.5
DCE21-CKL10-02	10	R1/4	9.5	21.5	26	12	17	
DCE21-CKL10-03		R3/8	10.5	22.5				
DCE21-CKL10-04		R1/2	13.5	27.5				28
DCE21-CKL12-02	12	R1/4	9.5	22.5	28.5	14	19	
DCE21-CKL12-03		R3/8	10.5	24				
DCE21-CKL12-04		R1/2	13.5	27.5				

DCE22-CKF 卡套螺纹直通



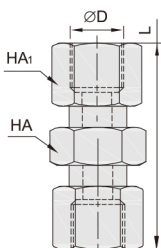
型号	ΦD	Rc	L ₁	L ₂	HA ₁	HA	
DCE22-CKF04-01	4	Rc1/8	8.5	21.5	13	10	
DCE22-CKF04-02		Rc1/4	11	24			16
DCE22-CKF06-01	6	Rc1/8	8.5	21.5	13	12	
DCE22-CKF06-02		Rc1/4	11	24			16
DCE22-CKF06-03		Rc3/8	12	25.5			20
DCE22-CKF08-01	8	Rc1/8	8.5	23	13	14	
DCE22-CKF08-02		Rc1/4	11	25.5			16
DCE22-CKF08-03		Rc3/8	12	27			20
DCE22-CKF08-04		Rc1/2	14	29.5			24
DCE22-CKF10-02	10	Rc1/4	11	27	16	17	
DCE22-CKF10-03		Rc3/8	12	28.5			20
DCE22-CKF10-04		Rc1/2	14	31			24
DCE22-CKF12-02	12	Rc1/4	11	27	17	19	
DCE22-CKF12-03		Rc3/8	12	28.5			20
DCE22-CKF12-04		Rc1/2	14	31			24

DCE23-CKST 卡套L型螺纹三通



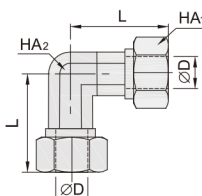
型号	ΦD	R	L ₁	L ₂	L ₃	L ₄	HA	HA ₁
DCE23-CKST04-01	4	R1/8	7.5	15.5	38.5	22.5	9	10
DCE23-CKST04-02		R1/4	9.5	19	45.5	25	10	
DCE23-CKST06-01	6	R1/8	7.5	16	38	24.5	9	12
DCE23-CKST06-02		R1/4	9.5	19	40	27	10	
DCE23-CKST06-03		R3/8	10.5	22.5	50.5	28.5	12	
DCE23-CKST08-01	8	R1/8	7.5	16	39	22.5	10	14
DCE23-CKST08-02		R1/4	9.5	19	41.5	25	10	
DCE23-CKST08-03		R3/8	10.5	22.5	51	28.5	12	
DCE23-CKST08-04		R1/2	13.5	27.5	56	30.5	14	
DCE23-CKST10-02	10	R1/4	9.5	21.5	50.5	28.5	10	17
DCE23-CKST10-03		R3/8	10.5	22.5	52	29.5	12	
DCE23-CKST10-04		R1/2	13.5	27.5	57	31.5	14	
DCE23-CKST12-02	12	R1/4	9.5	22.5	52.5	29.5	12	19
DCE23-CKST12-03		R3/8	10.5	24	53.5	30.5	12	
DCE23-CKST12-04		R1/2	13.5	27.5	57	31.5	14	

DCE24-CKU 卡套直通



型号	ΦD	L	HA	HA ₁
DCE24-CKU04	4	27	10	10
DCE24-CKU06	6	27	12	12
DCE24-CKU08	8	30.5	14	14
DCE24-CKU10	10	33.5	17	17
DCE24-CKU12	12	34	19	19

DCE31-CKV 卡套弯头



型号	ΦD	L	HA ₁	HA ₂
DCE31-CKV04	4	18.5	7	10
DCE31-CKV06	6	20.5	10	12
DCE31-CKV08	8	22.5	10	14
DCE31-CKV10	10	26	12	17
DCE31-CKV12	12	26.5	14	19