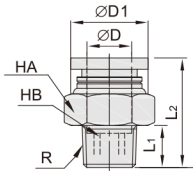


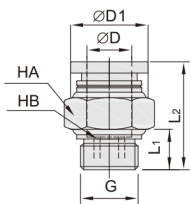
# 不锈钢气动接头

DCC01-SSC 螺纹直通



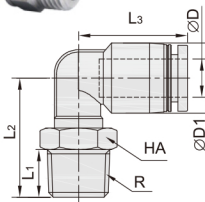
型号	$\Phi D$	R	$L_1$	$L_2$	$\Phi D1$	HB	HA
DCC01-SSC04-01	4	R1/8	7.5	16.8	10	3	10
DCC01-SSC06-01	6	R1/8	7.5	19.3	12	4	12
DCC01-SSC06-02		R1/4	9.5	19.8			
DCC01-SSC08-01	8	R1/8	7.5	23.7	14	6	14
DCC01-SSC08-02		R1/4	9.5	22.2			
DCC01-SSC10-02	10	R1/4	9.5	26.4	17	8	17
DCC01-SSC10-03		R3/8	10.5	22.9			21
DCC01-SSC10-04		R1/2	13.5	26.5			20
DCC01-SSC12-02	12	R1/4	9.5	30.4	20	10	20
DCC01-SSC12-03		R3/8	10.5	26.4			21
DCC01-SSC12-04		R1/2	13.5	26.4			21

DCC02-SSCG 螺纹直通-G螺纹



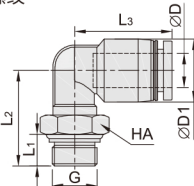
型号	$\Phi D$	G	$L_1$	$L_2$	$\Phi D1$	HB	HA	
DCC02-SSCG-M5	4	M5	4	19.3	10	/	10	
DCC02-SSCG-M6		M6	4	19.3			3	13
DCC02-SSCG-G01								G1/8
DCC02-SSCG-G02		G1/4	6.5	17.3			16	
DCC02-SSCG-M5	6	M5	4	20.6	12	/	12	
DCC02-SSCG-G01		G1/8	5.5	18.8			4	13
DCC02-SSCG-G02		G1/4	6.5	18.8				16
DCC02-SSCG-G01	8	G1/8	5.5	23.2	14	5	14	
DCC02-SSCG-G02		G1/4	6.5	20.7			6	16
DCC02-SSCG-G02	10	G1/4	6.5	26.4	17	8	17	
DCC02-SSCG-G03		G3/8	7.5	22.9			20	
DCC02-SSCG-G04		G1/2	9	25.5			24	
DCC02-SSCG-G02	12	G1/4	6.5	29.4	20	10	20	
DCC02-SSCG-G03		G3/8	7.5	22.9			21	
DCC02-SSCG-G04		G1/2	9	25.4			24	

DCC11-SSL L型螺纹弯头



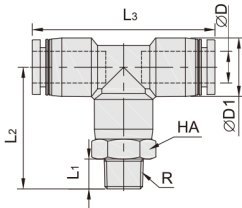
型号	$\Phi D$	Rc	$L_1$	$L_2$	$L_3$	$\Phi D1$	HA
DCC11-SSL04-01	4	R1/8	7.5	20	18.3	10	10
DCC11-SSL06-01	6	R1/8	7.5	23	20.3	12	12
DCC11-SSL06-02		R1/4	9.5	23	20.3		14
DCC11-SSL08-01	8	R1/8	7.5	23.5	22.3	14	12
DCC11-SSL08-02		R1/4	9.5	23.5	22.3		14
DCC11-SSL10-02	10	R1/4	9.5	33	26.4	17	17
DCC11-SSL10-03		R3/8	10.5	30			21
DCC11-SSL10-04		R1/2	13.5	32			21
DCC11-SSL12-02	12	R1/4	9.5	34.5	29.4	20	17
DCC11-SSL12-03		R3/8	10.5	31.5			21
DCC11-SSL12-04		R1/2	13.5	33.5			21

DCC12-SSL-G  
L型螺纹弯头-G螺纹



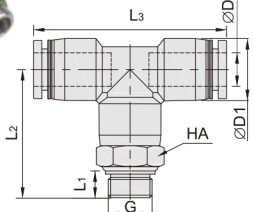
型号	$\Phi D$	G	$L_1$	$L_2$	$L_3$	$\Phi D1$	HA
DCC12-SSL04-M5	4	M5	4	17.5	18.3	10	10
DCC12-SSL04-G01		G1/8	5.5	20			13
DCC12-SSL06-M5	6	M5	4	17.5	20.3	12	13
DCC12-SSL06-G01		G1/4	6.5	23			16
DCC12-SSL08-G01	8	G1/8	5.5	22.5	22.3	14	13
DCC12-SSL08-G02		G1/4	6.5	23.5			16
DCC12-SSL10-G02	10	G1/4	6.5	31	26.4	17	17
DCC12-SSL10-G03		G3/8	7.5	28.5			20
DCC12-SSL10-G04		G1/2	9	29			24
DCC12-SSL12-G02	12	G1/4	6.5	32.5	29.4	20	17
DCC12-SSL12-G03		G3/8	7.5	30			20
DCC12-SSL12-G04		G1/2	9	30.5			24

DCC21-SSB 螺纹正三通



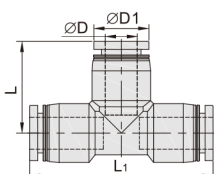
型号	$\Phi D$	R	$L_1$	$L_2$	$L_3$	$\Phi D1$	HA
DCC21-SSB04-01	4	R1/8	7.5	20	36.6	10	10
DCC21-SSB06-01	6	R1/8	7.5	23	40.6	12	12
DCC21-SSB06-02		R1/4	9.5	23	40.6		14
DCC21-SSB08-01	8	R1/8	7.5	23.5	44.6	14	14
DCC21-SSB08-02		R1/4	9.5	23.5	44.6		14
DCC21-SSB10-02	10	R1/4	9.5	33	52.8	17	17
DCC21-SSB10-03		R3/8	10.5	30	52.8		17
DCC21-SSB10-04		R1/2	13.5	32	52.8		21
DCC21-SSB12-02	12	R1/4	9.5	34.5	58.8	20	20
DCC21-SSB12-03		R3/8	10.5	31.5	58.8		20
DCC21-SSB12-04		R1/2	13.5	33.5	58.8		21

DCC22-SSBG 螺纹正三通-G螺纹



型号	$\Phi D$	G	$L_1$	$L_2$	$L_3$	$\Phi D1$	HA
DCC22-SSBG-M5	4	M5	4	17.5	36.6	10	10
DCC22-SSBG-G01		G1/8	5.5	20			13
DCC22-SSBG-M5	6	M5	4	17.5	44.6	12	10
DCC22-SSBG-G01		G1/8	5.5	22			13
DCC22-SSBG-G02	8	G1/4	6.5	23	52.8	14	16
DCC22-SSBG-G01		G1/8	5.5	22.5			13
DCC22-SSBG-G02	10	G1/4	6.5	23.5	52.8	17	16
DCC22-SSBG-G02		G1/4	6.5	31			17
DCC22-SSBG-G03	12	G3/8	7.5	28.5	58.8	20	20
DCC22-SSBG-G04		G1/2	9	29			24
DCC22-SSBG-G02	12	G1/4	6.5	32.5	58.8	20	17
DCC22-SSBG-G03		G3/8	7.5	30			20
DCC22-SSBG-G04		G1/2	9	30.5			24

DCC31-SSE  
联管正三通



型号	$\Phi D$	$\Phi D1$	L	$L_1$
DCC31-SSE04	4	10	18.3	36.6
DCC31-SSE06	6	12	20.3	40.6
DCC31-SSE08	8	14	22.3	44.6
DCC31-SSE10	10	17	26.4	52.8
DCC31-SSE12	12	20	26.4	58.8