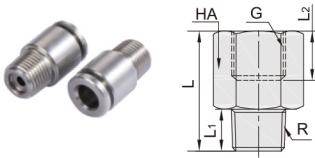


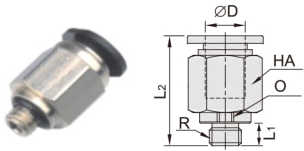
DCB61-CPCVC 单向阀



型号	ΦD	R	L <sub>1</sub>	L <sub>2</sub>	ΦP	HA
DCB61-CPCVC04-M5	4	M5	3.5	29	10	10
DCB61-CPCVC04-M6		M6	4	30	10	10
DCB61-CPCVC04-01	6	R1/8	7.5	25	10	10
DCB61-CPCVC06-01		R1/8	7.5	26	12	12
DCB61-CPCVC06-02	8	R1/4	9.5	33	12	14
DCB61-CPCVC08-01		R1/8	7.5	28.5	14	14
DCB61-CPCVC08-02		R1/4	9.5	34.8	14	14

型号	ΦD	R	L <sub>1</sub>	L <sub>2</sub>	ΦP	HA
DCB61-CPCVC08-03	8	R3/8	10.5	34.8	14	17
DCB61-CPCVC10-02		R1/4	9.5	29.5		
DCB61-CPCVC10-03	10	R3/8	10.5	41	17	21
DCB61-CPCVC10-04		R1/2	13.5	43		
DCB61-CPCVC12-02	12	R1/4	9.5	41		
DCB61-CPCVC12-03		R3/8	10.5	42.5	20	
DCB61-CPCVC12-04		R1/2	13.5	44.5		

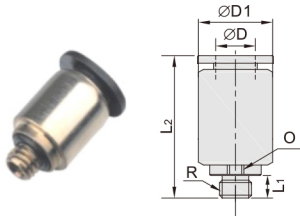
DCB71-IPC 螺纹直通迷你型



型号	ΦD	R	L <sub>1</sub>	L <sub>2</sub>	HB	HA
DCB71-IPC03-M3	3	M3×0.5	3.5	15	/	8
DCB71-IPC03-M5		M3×0.8	3.4	16		
DCB71-IPC03-M6	4	M6×1.0	4	16	2	10
DCB71-IPC03-01		R1/8	7.5	15		
DCB71-IPC03-G01	6	G1/8	5.5	14.6	14	14
DCB71-IPC04-M3		M3×0.5	3.5	17.5	/	
DCB71-IPC04-M5	4	M3×0.8	3.5	18.5	2	8
DCB71-IPC04-M6		M6×1.0	4	19		
DCB71-IPC04-G01C		R1/8	7.5	16	3	10

型号	ΦD	R	L <sub>1</sub>	L <sub>2</sub>	HB	HA
DCB71-IPC04-G01	4	G1/8	5.5	15.2	14	17
DCB71-IPC04-G02		G1/4	7.5	17.2	3	
DCB71-IPC06-M3	6	M3×0.5	3.5	18	2	10
DCB71-IPC06-M5		M3×0.8	3.5	18		
DCB71-IPC06-M6	4	M6×1.0	4	18.5	2	13
DCB71-IPC06-01		R1/8	7.5	18.5		
DCB71-IPC06-G01	6	G1/8	5	17.2	4	17
DCB71-IPC06-G02		G1/4	7.5	18.5		

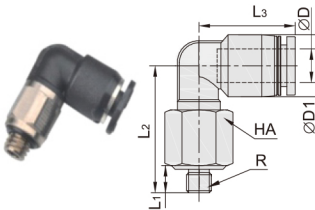
DCB72-IPOC 圆螺纹一通迷你型



型号	ΦD	R	L <sub>1</sub>	L <sub>2</sub>	ΦD1	HB
DCB72-IPOC03-M3	3	M3×0.5	3.5	15	6.5	2
DCB72-IPOC03-M5		M5×0.8	3.5	16	7	
DCB72-IPOC03-M6	4	M6×1.0	4	16	8	10
DCB72-IPOC03-G01		G1/8	5.5	14.6	14	
DCB72-IPOC04-M3	6	M3×0.5	3.5	17.5	8	/
DCB72-IPOC04-M5		M5×0.8	3.5	18		
DCB72-IPOC04-M6	4	M6×1.0	4	18.5	9	2
DCB72-IPOC04-M7		M7×1.0	5.5	20		
DCB72-IPOC04-01		R1/8	7.5	15.5	10	3

型号	ΦD	R	L <sub>1</sub>	L <sub>2</sub>	ΦD1	HB
DCB72-IPOC04-G01	4	G1/8	5.5	15.2	14	3
DCB72-IPOC04-G02		G1/4	7.5	17.2	17	
DCB72-IPOC06-M3	6	M3×0.5	3.5	18	/	2
DCB72-IPOC06-M5		M5×0.8	3.5	18		
DCB72-IPOC06-M6	4	M6×1.0	4	18.5	10	4
DCB72-IPOC06-M7		M7×1.0	4.5	19.5		
DCB72-IPOC06-01	6	R1/8	7.5	18.5		4
DCB72-IPOC06-G01		G1/8	5.5	17.6	14	
DCB72-IPOC06-G02		G1/4	7.5	18.5	17	

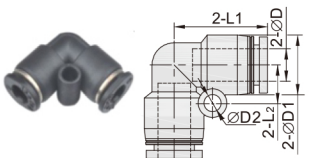
DCB73-IPL L型螺纹弯头迷你型



型号	ΦD	R	L <sub>1</sub>	L <sub>2</sub>	L <sub>3</sub>	ΦD1	HA
DCB73-IPL03-M3	3	M3×0.5	3.5	16		8	10
DCB73-IPL03-M5		M5×0.8	3.5	16			
DCB73-IPL03-M6	4	M6×1.0	4	16.5	12	7.5	10
DCB73-IPL03-01		R1/8	7.5	16.5			
DCB73-IPL03-G01	6	G1/8	5.5	16		14	14
DCB73-IPL04-M3		M3×0.5	3.5	17.2			
DCB73-IPL04-M5	4	M5×0.8	3.5	17.2	14	9.5	8
DCB73-IPL04-M6		M6×1.0	4	17.6			
DCB73-IPL04-01		R1/8	7.5	15.5	10		3

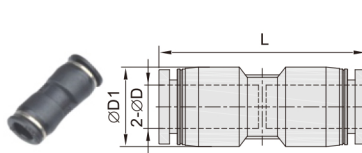
型号	ΦD	R	L <sub>1</sub>	L <sub>2</sub>	L <sub>3</sub>	ΦD1	HA
DCB73-IPL04-01	4	R1/8	7.5	18		10	13
DCB73-IPL04-G01		G1/8	5	16.5	14		
DCB73-IPL04-G02	6	G1/4	7.5	19.5		17	8
DCB73-IPL06-M5		M5×0.8	3.5	17.2			
DCB73-IPL06-M6	4	M6×1.0	4	17.6		10	13
DCB73-IPL06-01		R1/8	7.5	18	16		
DCB73-IPL06-G01	6	G1/8	5	16.5		17	13
DCB73-IPL06-G02		G1/4	7.5	19.5			

DCB74-IPV 塑料弯头迷你型



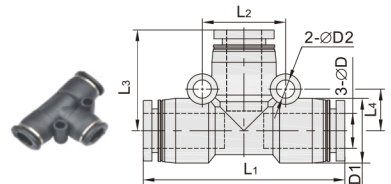
型号	ΦD	ΦD1	ΦD2	L <sub>1</sub>	L <sub>2</sub>
DCB74-IPV03	3	7.5		12	4.8
DCB74-IPV04	4	9.5	3.2	14.5	6
DCB74-IPV06	6	11.5		16	6.5

DCB75-IPU 塑料直通迷你型



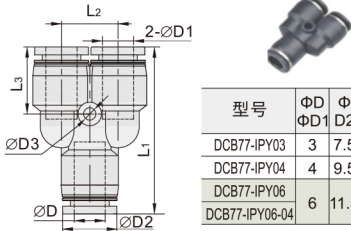
型号	ΦD	ΦD1	L
DCB75-IPU03	3	7.5	21
DCB75-IPU04	4	9.5	26.5
DCB75-IPU06	6	11.5	27.5

DCB76-IPE 塑料正三通迷你型



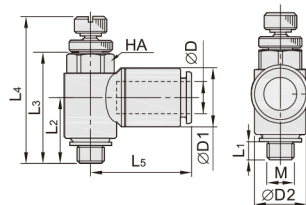
型号	ΦD	ΦD1	ΦD2	L <sub>1</sub>	L <sub>3</sub>	L <sub>4</sub>	L <sub>5</sub>
DCB76-IPE03	3	7.5		23.5	9.6	11.8	4.8
DCB76-IPE04	4	9.5	3.2	29	12	14.5	6
DCB76-IPE06	6	11.5		32	13	16	6.5

DCB77-IPY 塑料Y型迷你型



型号	ΦD	ΦD1	ΦD2	ΦD3	L <sub>1</sub>	L <sub>2</sub>	L <sub>3</sub>
DCB77-IPY03	3	7.5			22.7	7.8	9.5
DCB77-IPY04	4	9.5			28	9.2	
DCB77-IPY06	6	11.5	3.2	30	11	12	
DCB77-IPY06-04							

DCB78-ISC04 迷你节流阀



型号	ΦD	M	L <sub>1</sub>	L <sub>2</sub>	L <sub>3</sub>
DCB78-ISC04-M5	4	M5	3.2	12.2	20
	L4 (max)	L5	ΦD1	ΦD2	HA
	29	18	9.5	9.6	8