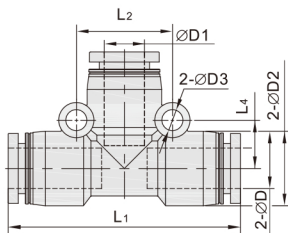


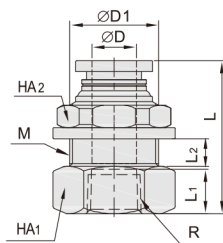
# 塑料气动接头

DCA76-CPE 塑料正三通



型号	ΦD	ΦD1	ΦD2	ΦD3	L1	L2	L3	L4
DCA76-CPE04	4	11.5			38	14	19	7
DCA76-CPE06	6	13.5		3.2	39	16	19.2	8
DCA76-CPE08	8	15			45	19	22.5	9.5
DCA76-CPE10	10	19	4.2	57	24	27.8	12	
DCA76-CPE12	12	21.5	4.3	59	26		13	
DCA76-CPE14	14	23.5	4.4		30	29.5	14	
DCA76-CPE16	16	26.5	4.5	64	33	32	15	
DCA76-CPE06-04-06	6	4	13.5		39	16	19.2	8
DCA76-CPE08-04-08	8	4	15	3.2	45	19	22.5	9.5
DCA76-CPE08-06-08	8	6	15	3.2	45	19	55.5	9.5
DCA76-CPE10-06-10	10	6	19	4.2	57	24	26.3	12
DCA76-CPE10-08-10	10	8	19			24	26.8	
DCA76-CPE12-08-12	12	8	21.5	4.3	59	26	28.5	13
DCA76-CPE12-10-12	12	10	21.5				29.5	
DCA76-CPE14-12-14	14	12	23.5	4.4		30		14
DCA76-CPE16-12-16	16	12			64	33	32	15
DCA76-CPE16-14-16	16	14	26.5	4.5	64	33		15

DCA91-CPMF 隔板内螺纹直通

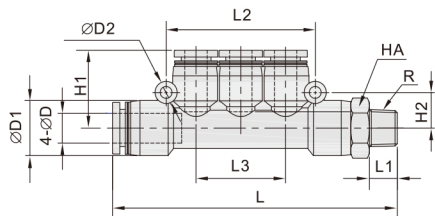
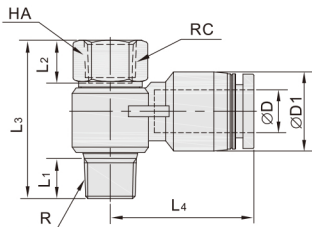


型号	ΦD	R	L	L1	L2	ΦD1	HA2	HA1	M
DCA91-CPMF04-01	4	R1/8	24	8.5		6	10	14	M12×1
DCA91-CPMF04-02	4	R1/4	26.5	11				14	
DCA91-CPMF06-01	6	R1/8	24.8	8.5		7	12	17	M14×1
DCA91-CPMF06-02	6	R1/4	29.5	11				17	
DCA91-CPMF06-03	6	R3/8	30.5	12				21	
DCA91-CPMF06-04	6	R1/2	33	14				24	
DCA91-CPMF08-01	8	R1/8	26.5	8.5		7.5	14	19	M16×1
DCA91-CPMF08-02	8	R1/4	32	11			14	21	
DCA91-CPMF08-03	8	R3/8	34.3	12			14	19	
DCA91-CPMF08-04	8	R1/2	36.5	14			14	19	M16×1
DCA91-CPMF10-01	10	R1/8	30	8.5		9.5	17		M20×1
DCA91-CPMF10-02	10	R1/4	32.5	11				24	
DCA91-CPMF10-03	10	R3/8	34	12				24	
DCA91-CPMF10-04	10	R1/2	38	14				24	
DCA91-CPMF12-01	12	R1/8	31.5	8.5		10	20		M22×1
DCA91-CPMF12-02	12	R1/4	34	11				26	
DCA91-CPMF12-03	12	R3/8	35	12				26	
DCA91-CPMF12-04	12	R1/2	37	14				26	

DCB11-CPKD 螺纹五通



DCB01-CPHF 串联接头



型号	ΦD	R	L	L1	L2	L3	L4	ΦD1	HA
DCB01-CPHF04-M5	4	M5	M5	3.5	5.5	20	20.5	8	
DCB01-CPHF04-01	4	R1/8	Rc1/8	7.5	8.5	29	23.5	11.5	14
DCB01-CPHF04-02	4	R1/4	Rc1/4	9.5	11	35	25.5	17	
DCB01-CPHF06-M5	6	M5	M5	3.5	5.5	20	22	8	
DCB01-CPHF06-01	6	R1/8	Rc1/8	7.5	8.5	29	23.5	11.5	14
DCB01-CPHF06-02	6	R1/4	Rc1/4	9.5	11	35	25.4	13.5	17
DCB01-CPHF06-03	6	R3/8	Rc3/8	10.5	12	40	29.5	21	
DCB01-CPHF08-01	8	R1/8	Rc1/8	7.5	8.5	29	26.5	14	
DCB01-CPHF08-02	8	R1/4	Rc1/4	9.5	11	35	28.9	17	
DCB01-CPHF08-03	8	R3/8	Rc3/8	10.5	12	40	29.8	21	
DCB01-CPHF08-04	8	R1/2	Rc1/2	13.5	14	47.5	32.5	24	
DCB01-CPHF10-02	10	R1/4	Rc1/4	9.5	11	36	32.6	17	
DCB01-CPHF10-03	10	R3/8	Rc3/8	10.5	12	40	33	19	21
DCB01-CPHF10-04	10	R1/2	Rc1/2	13.5	14	47.5	36	24	
DCB01-CPHF12-02	12	R1/4	Rc1/4	9.5	11	36	33.5	17	
DCB01-CPHF12-03	12	R3/8	Rc3/8	10.5	12	40	35.5	21.5	21
DCB01-CPHF12-04	12	R1/2	Rc1/2	13.5	14	47.5	36.5	24	

型号	ΦD	R	L1	L	L2	L3	ΦD1	ΦD2	H1	H2	HA
DCB11-CPKD04-M5	4	M5	3.5	66							10
DCB11-CPKD04-01	4	R1/8	7.5	68.5			13		19		
DCB11-CPKD04-02	4	R1/4	9.5	71.5							14
DCB11-CPKD04-03	4	R3/8	10.5	72.5							17
DCB11-CPKD06-M5	6	M5	3.5	67	42	26			9		10
DCB11-CPKD06-01	6	R1/8	7.5	70							12
DCB11-CPKD06-02	6	R1/4	9.5	72			14.5	3.2	20.5		14
DCB11-CPKD06-03	6	R3/8	10.5	73							17
DCB11-CPKD06-04	6	R1/2	13.5	76.5							21
DCB11-CPKD08-01	8	R1/6	7.5	89	48	29			24		14
DCB11-CPKD08-02	8	R1/4	9.5	91							17
DCB11-CPKD08-03	8	R3/8	10.5	92.5							21
DCB11-CPKD08-04	8	R1/2	13.5	96			18.4			11	
DCB11-CPKD10-01	10	R1/8	7.5	100							17
DCB11-CPKD10-02	10	R1/4	9.5	102	60.8	36.8		4.2	28.5		
DCB11-CPKD10-03	10	R3/8	10.5	103							21
DCB11-CPKD10-04	10	R1/2	13.5	106.5							

气动接头  
39