

精密型/常规型真空吸盘/吸盘专用螺钉

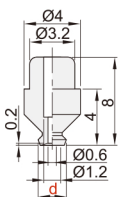


代码	材质	颜色
DSH11	丁腈橡胶NBR	黑色
DSH12	导电性硅橡胶SE	黑色
DSH13	氟橡胶F	灰色

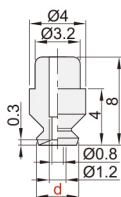
代码	类型	主体	
		材质	表面处理
DSJ11	吸盘专用螺钉	黄铜	无电解镀锌

■真空吸盘

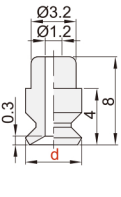
盘径 $\varnothing 2$



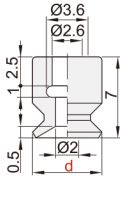
盘径 $\varnothing 3$



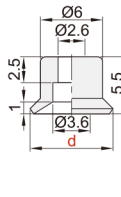
盘径 $\varnothing 4$



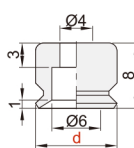
盘径 $\varnothing 6$



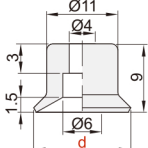
盘径 $\varnothing 8$



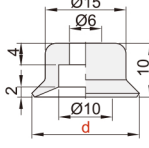
盘径 $\varnothing 10$



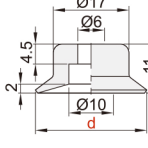
盘径 $\varnothing 15$



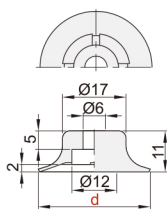
盘径 $\varnothing 20$



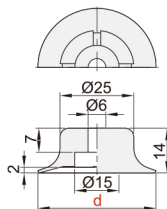
盘径 $\varnothing 25$



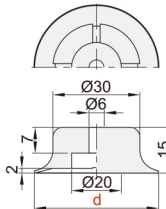
盘径 $\varnothing 30$



盘径 $\varnothing 40$

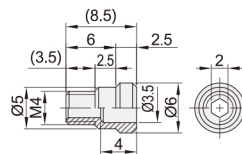


盘径 $\varnothing 50$

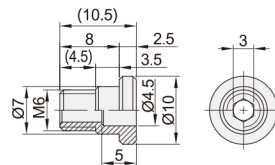


■吸盘螺钉

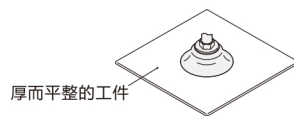
规格: 4



规格: 6



■使用示例



■小型真空吸盘

代码	型号				
	盘径 d				
DSH11	2	3	4	6	8
DSH12	10	15			
DSH13	20	25			
	30	40	50		

■吸盘组件

代码	型号		重量 (g)	适用吸盘
	规格			
DSJ11	4		1.1	盘径 d10 / d15 盘径 d20 / d25
	6			



请按图示订货

■ DSH11-d2

代码	盘径 d				
DSH11	2	3	4	6	8



交期Delivery

5天 发货

○本产品发货时间不含周日