

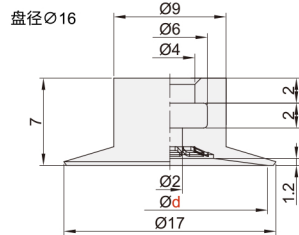
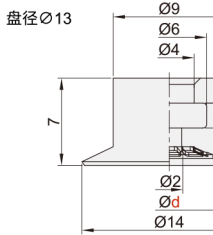
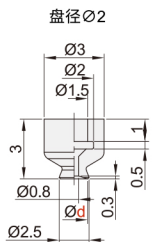
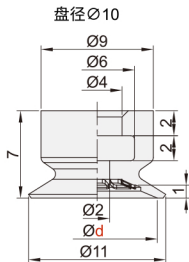
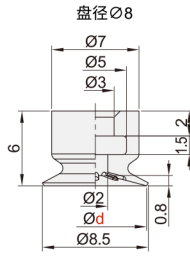
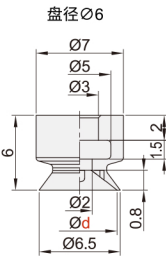
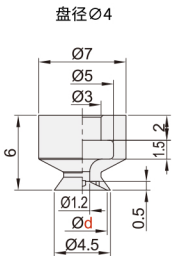
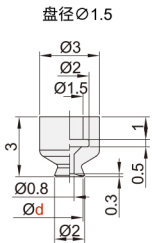
精密型 真空吸盘 ◀ 平形/带沟平形/风琴形



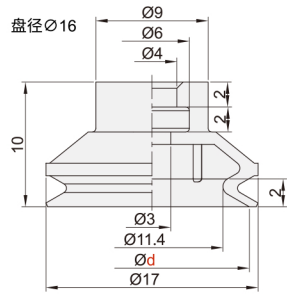
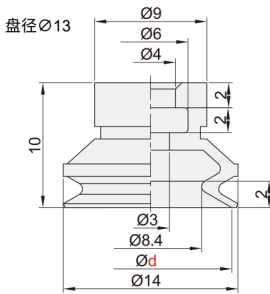
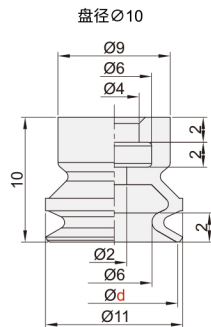
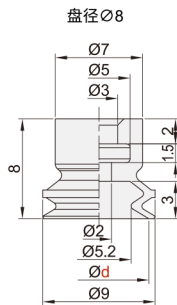
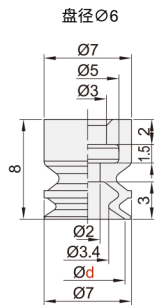
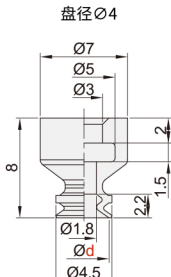
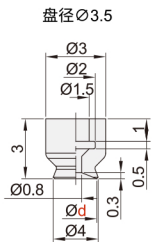
平形 DSN0/02/03/04

带沟平形 DSN11/12/13/14

代码	类型	吸盘材质	颜色
DSN01	平形	丁腈橡胶	黑色
DSN02		硅胶	白色
DSN03		导电性丁腈橡胶	黑色
DSN04		导电性硅胶	黑色
DSN11	带沟平形	丁腈橡胶	黑色
DSN12		硅胶	白色
DSN13		导电性丁腈橡胶	黑色
DSN14		导电性硅胶	黑色
DSN21	风琴形	丁腈橡胶	黑色
DSN22		硅胶	白色
DSN23		导电性丁腈橡胶	黑色
DSN24		导电性硅胶	黑色



风琴形 DSN21/22/23/24



型号	
代码	盘径 d
平形 DSN01~04	1.5/2/3.5
带沟平形 DSN11~14	4/6/8/10/13/16
风琴形 DSN21~24	



■ DSN01-d2

代码	盘径 d
DSN01	1.5/2/3.5



交期 Delivery

5天

发货

○本产品发货时间不含周日