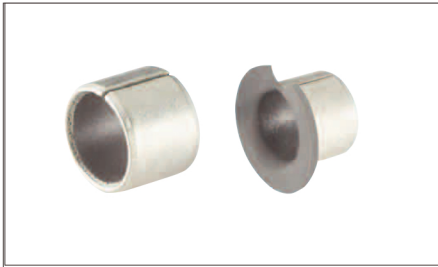
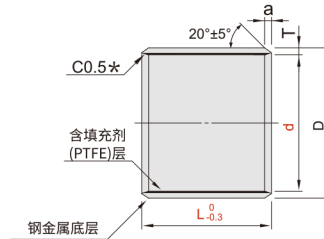
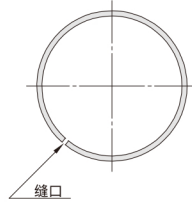


复合层式无油衬套 ◀ 直柱型 / 带肩型



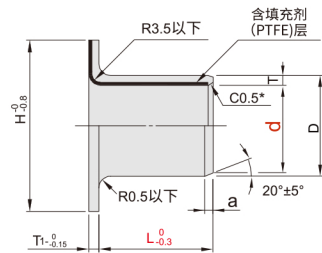
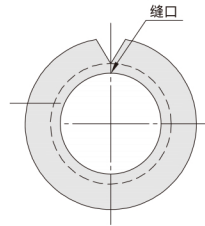
代码	类型	材质
FCY01	直柱型	复合材质
FCY02	带肩型	

FCY01直柱型



- 外径倒角 T=1.0时, a0.5
- T=1.5时, a0.8
- T=2.0时, a1.0
- T=2.5时, a1.0

FCY02带肩型



无油衬套 24

型号	代码	d	L	FCY01		FCY02			轴径	基准尺寸	公差	压入后的内径公差									
				D	T	D	H	T/T ₁													
直柱型 FCY01	3	3 4 5 6*	5	+0.047 +0.017	1	0 -0.025	4.6	7	0.8	0	-0.025	3	+0.025 +0.034	+0.062 0							
	4	3 4 5 6 8	6				5.6	9				4									
	5	3 4 5 6 8	7				7	10				5	+0.025 +0.037								
	6	3 4 5 6 8 10 12	8	+0.055 +0.025			8	12				6									
	8	3 4 5 6 8 10 12 15	10				10	15				8	+0.025 +0.040								
	10	5 6 8 10 12 15 20	12				12	18				10									
	12	5 6 8 10 12 15 20	14	+0.060 +0.030			14	20				12									
	13	5 6 8 10 12 15 20	15				15	21				13									
	15	5 6 8 10 12 15 20 25 30	17	+0.065 +0.035			17	23				15	+0.025 +0.043		+0.068 0						
	16	8 10 12 15 20 25 30	18	+0.070 +0.035			18	24				16									
	18	8 10 12 15 20 25 30 35	20	+0.075 +0.040			20	26				18	+0.071 0								
	带肩型 FCY02	20	8 10 12 15 20 25 30 35	23			+0.080 +0.045	1.5				0 -0.030	23		31	1.5	0	-0.030	20	+0.025 +0.046	+0.081 0
		22	8 10 12 15 20 25 30 35 40	25									25		33				22		
		25	10 12 15 20 25 30 35 40 50*	28			+0.085 +0.050						28		36				25		
		30	10 12 15 20 25 30 35 40 50	34									34		42				30		
35		10 12 15 20 25 30 35 40 50	39	+0.090 +0.050	39	49	35		+0.085 0												
40		10 12 15 20 25 30 35 40 50 60	44		44	54	40		+0.025 +0.050												
50		12 15 20 25 30 35 40 50 60	55	+0.105 +0.060	2.5	0 -0.040	55		65	2.5	0 -0.040		50	+0.110 0							

■ “*”表示只适用于直柱式



FCY01-d3-L5

型式		L
代码	d	
FCY01	3	3 4 5 6*

请按图示订货



交期Delivery

4天 发货

○本产品发货时间不含周日