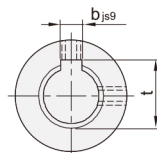
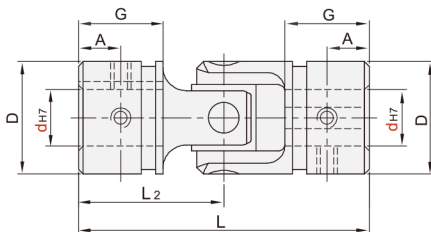
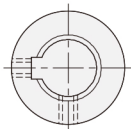


万向联轴器 ◀ 单节/双节 · 键槽圆孔型

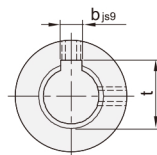
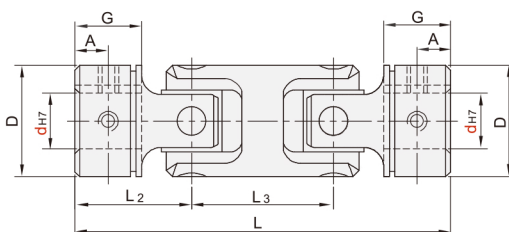
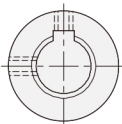


代码	类型		材质	表面处理	附件
			主体		
CXK01	键槽圆孔型	单节	SCM415	发黑	2个挡圈
CXK51			SUS304	---	
CXK21		双节	SCM415	发黑	
CXK72			SUS304	---	

键槽圆孔型单节
CXK01/CXK51



键槽圆孔型双节
CXK21/CXK72



型号		D	L	G	L ₂	L ₃	b×t	工程扭矩	A
代码	d								
CXK01 CXK51	6	12	31	9	15.5	—	—	5.3	4.5
	8	16	36	9	18	—	2×9	12	4.5
	10	20	42	10	21	—	3×11.4	26	5
	12	23	52	14	26	—	4×13.8	45	7
	14	25	59	16	29.5	—	5×16.3	71	8
	16	32	82	23	41	—	5×18.3	132	11.5
	18	36	87	25	43.5	—	6×20.8	175	12.5
	20	42	94	25	47	—	6×22.8	252	12.5
	22	45	95	22	47.5	—	6×24.8	332	11
	25	50	108	26	54	—	8×28.3	495	13
CXK21 CXK72	8	16	58	9	18	22	2×9	9.2	4.5
	10	20	68	10	21	26	3×11.4	24	5
	12	23	83	14	26	31	4×13.8	33	7
	14	25	94	16	29.5	35	5×16.3	49	8
	16	32	125	23	41	43	5×18.3	98	11.5
	18	36	132	25	43.5	45	6×20.8	130	12.5
	20	42	149	25	47	55	6×22.8	189	12.5
	22	45	150	22	47.5	55	6×24.8	249	11
	25	50	173	26	54	65	8×28.3	363	13
	30	58	200	29	61	78	8×33.3	595	14.5



请按图示订货

■ CXK01-d8

型号	d
代码	8
CXK01 CXK51	



交期Delivery

3天 发货

○本产品发货时间不含周日