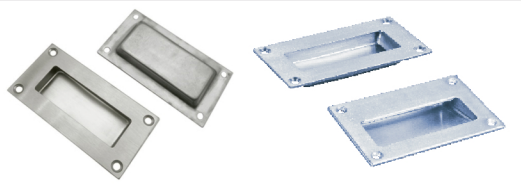
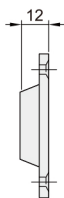
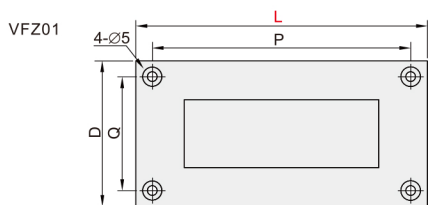


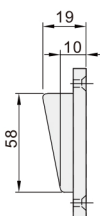
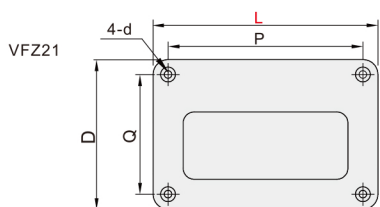
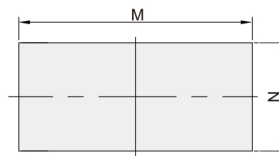
嵌入式拉手 ◀ 标准型/异型·外部固定型



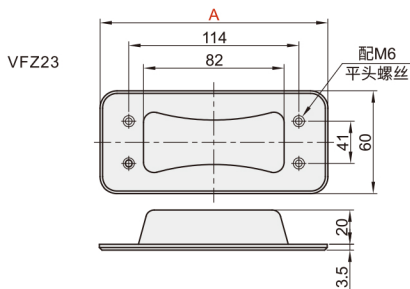
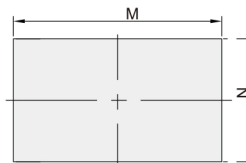
代码	类型	拉手位置	材质	表面处理
VFZ01	标准型	/	SUS304	发纹
VFZ21	异型			
VFZ23	标准型	对称	ZDC	喷塑黑
VFZ25			PA	黑色
VFZ31	异型	偏心	SUS304	/



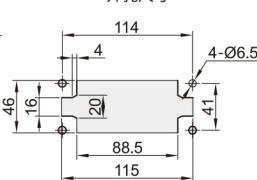
安装孔尺寸



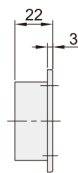
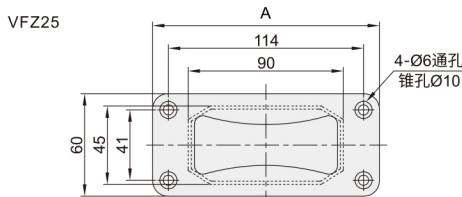
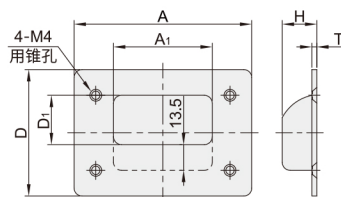
安装孔尺寸



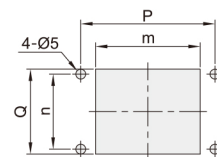
开孔尺寸



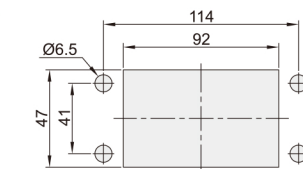
VFZ31



开孔尺寸



开孔尺寸



型号	参考重量
代码 A	(kg/pcs)
VFZ23	0.23
VFZ25	0.04

型号	开孔尺寸								参考重量		
代码	L	A ₁	D	D ₁	H	T	P	Q	m	n	(kg/pcs)
VFZ31	90	50	64	25	17.5	2.5	68	43	53	38	0.09

型号		L	P	Q	D	d	N	M
VFZ01	代码	102	90					80
		125	113	40	51	\	37	105
		150	138					130
VFZ21	代码	128	110	65	83	5	59	99



请按图示订货

VFZ01-L150

型号		L	P
代码	L	150	138

交期Delivery

4天 发货

○本产品发货时间不含周日