

脚轮 ◀ 轻载型(50~60KG)

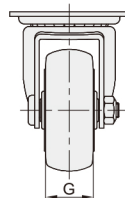
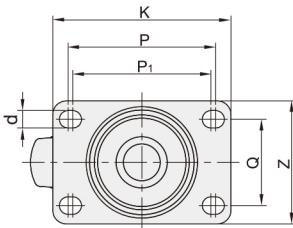
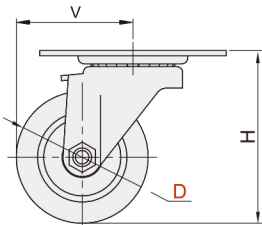
水平调节
脚轮
脚杯
69



代码	类型	材质		表面处理
		主体	轮	
WKF01	万向型	Q235A	W (人造胶)	镀锌
WKF02	万向挡块型 边刹			
WKF21	固定型			

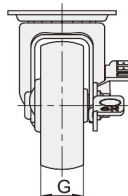
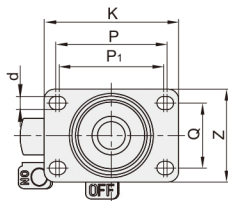
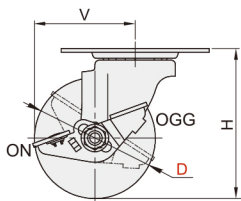
万向型

WKF01



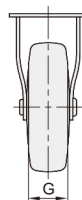
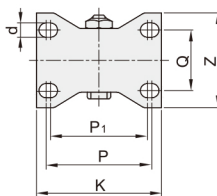
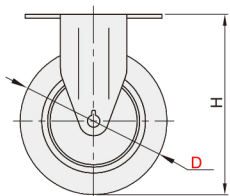
边刹

WKF02



固定型

WKF21



型号		轮材质	H	P	P ₁	Q	d	K	Z	G	V (固定型无此数据)	容许负载 (KG)
代码	D											
WKF01	65	W	85	76.2	71.4	44.5	9	92	63.5	27	58	50
WKF02	75		93								63	
WKF21	100		122								82	



请按图示订货

■ WKF21-D75-W

型号		轮材质
代码	D	
WKF21	65	W
	75	



交期Delivery

4天

发货

○本产品发货时间不含周日