

脚轮 ◀ 重载型(220~540KG)

水平调节
脚轮

69

固定型

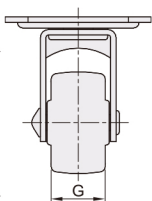
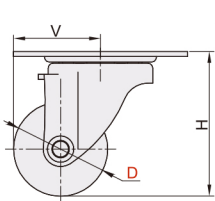


活动型

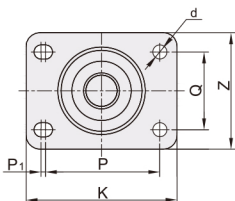


代码	类型	材质		表面处理
		主体	轮	
WKG01	万向型	Q235A	N (玻璃纤维增强尼龙)	镀锌
WKG71				电泳
WKG02	万向挡块型	Q235A	N (玻璃纤维增强尼龙)	镀锌
WKG72	边刹			电泳
WKG03	固定型			电泳

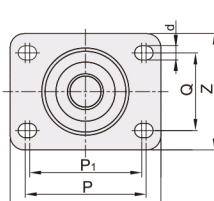
WKG01
WKG71



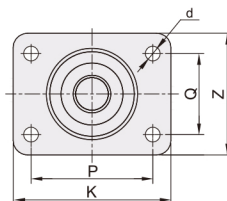
安装面
WKG01



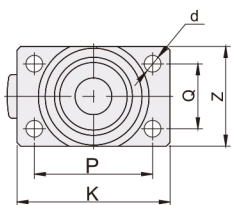
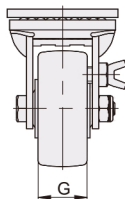
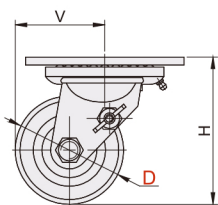
安装面
WKG71-D75A



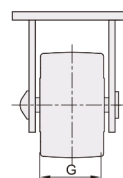
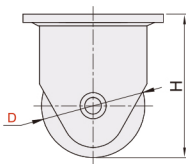
安装面
WKG71-D75A/D75B



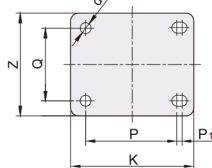
边刹 WKG02



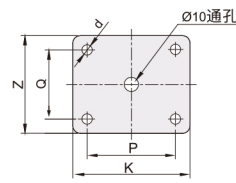
固定型 WKG72/WKG03



安装面 D50



安装面 D75/75A



型号		轮材质	H	P	P ₁	Q	d	K	Z	G	V (固定型无此数据)	容许负载 (KG)										
代码	D																					
WKG01	50	N	72	75	2.5	45	7.5	92	65	42	47	350										
	75		104	77.8	71.4		8.5	93.5	63.5	46	62	220										
WKG71	75A		102	86	\	60	9	105	81		46	60	540									
	75B		105				72	73.25	2.5	45				7.5	92	65	42	350				
WKG02	75C		\	72	73.25	2.5	45	7.5	92	65	42	47	350									
WKG72	50													102	86	\	60	8.9	105	81	46	310
WKG03	75													105	86	\	60	8.9	105	81	46	540
WKG03	75A												540									



请按图示订货

■ WKG71-D75B

型号		轮材质
代码	D	
WKG71	75A	N
	75B	



交期Delivery

4天 发货

○本产品发货时间不含周日