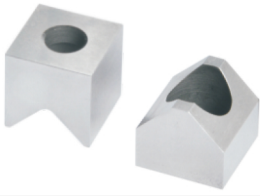
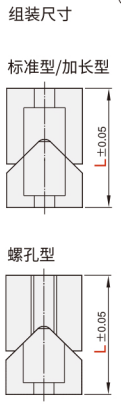
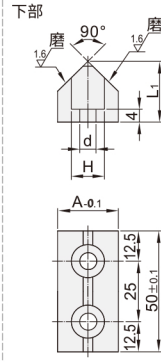
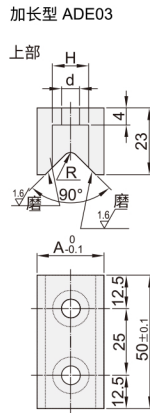
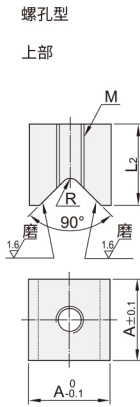
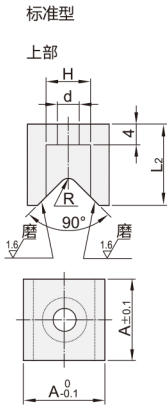
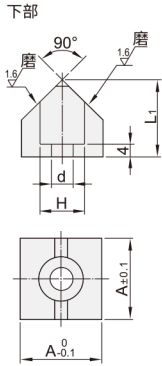


定位块 ◀ 平底型V型槽

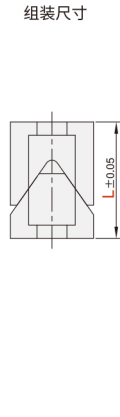
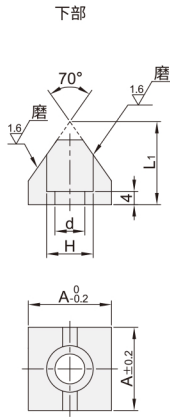
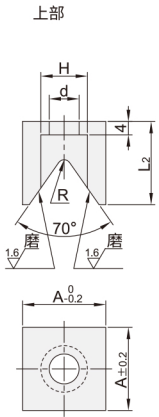


代码	类型		材质		硬度	
			国标	相当		
ADE01	V型孔型	平底型	45	S45C	40~43HRC	
ADE02						标准型
ADE03						螺孔型
ADE06						加长型
ADE08						70°型
						上部板固定型

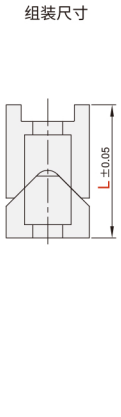
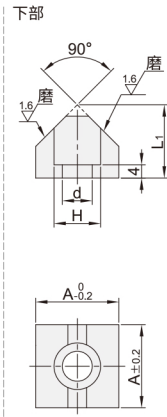
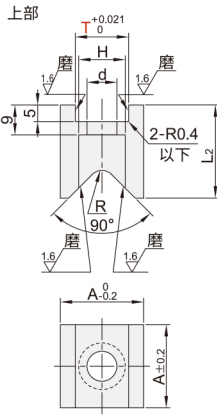
标准型 ADE01
螺孔型 ADE02



70°型 ADE06



上部板固定型 ADE08



型号		L	L1	L2	H	d	R	M	
代码	A								
	12	20	12	13	8	4.5	2	/	
ADE01	16	25	16	16	11	7			
	17								
	19								
ADE02	25	35	22	23	14	9			4
	16			19			7	M6	
	22			23			14	9	
ADE03	35	25	25	14	9	2	/		

型号		L	L1	L2	A	H	d	R
代码	T							
	12	25	14	22	20	9.5	5.5	2
16	16		24	25	11	7	4	
19	20		26	20	9.5	5.5	2	
ADE08	12	35	22	28	25	14	9	4
	16							
	19							



请按图示订货

■ ADE01-A20-L25

型号		L
代码	A	L
ADE01	20	25



交期Delivery

5天

发货

○本产品发货时间不含周日