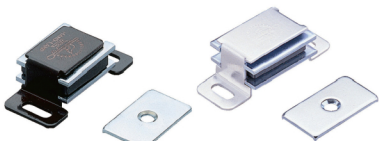
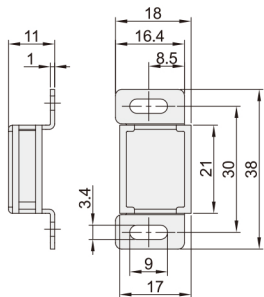


磁力扣 ◀ 普通吸力.双磁芯.金属型

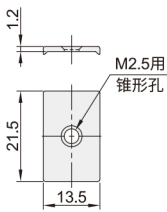


代码	类型	材质		表面处理	
		外壳	吸附板	外壳	吸附板
VPF01	普通吸力	ADC	SPCC	烤漆(褐色)	镀锌
VPF02				本色	
VPF03				阳极氧化	
VPF04		A1050P		阳极处理(金色)	镀彩锌
VPF05				阳极处理(黑色)	

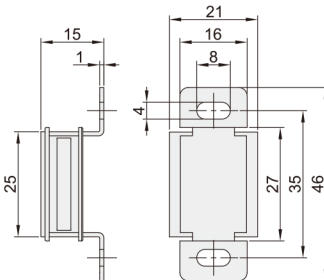
VPF01



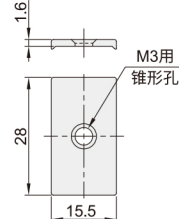
吸附板



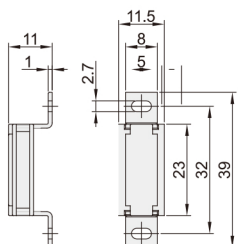
VPF02



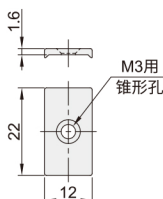
吸附板



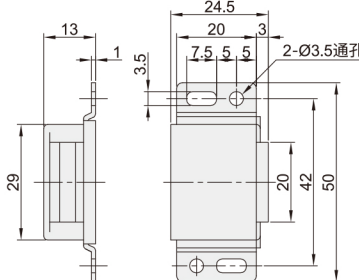
VPF03



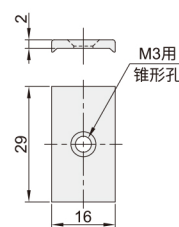
吸附板



VPF04 规格: 42

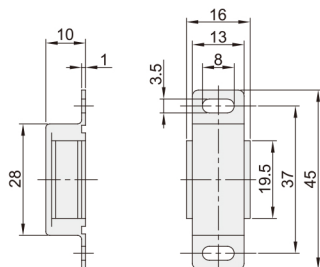


吸附板

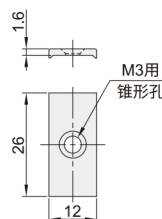


VPF04
VPF05

规格: 37



吸附板



球形扣
搭扣/磁力扣

65

型号		吸引力(kgf)	参考重量(kg/pcs)
代码	规格		
VPF01	30	0.8	0.017
VPF02	35	1.5	0.028
VPF03	32	2	0.012

型号		吸引力(kgf)	参考重量(kg/pcs)
代码	规格		
VPF04	37	1.2	0.019
	42	1.5	0.036
VPF05	37	1.2	0.019



请按图示订货

VPF01-30

型号

代码 规格

VPF01 30



交期Delivery

5天 发货

○本产品发货时间不含周日