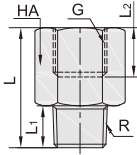


# 塑料气动接头

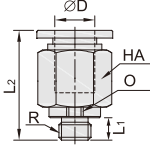
HDCB61-CPCVC 单向阀



型号	ΦD	R	L <sub>1</sub>	L <sub>2</sub>	ΦP	HA
HDCB61-CPCVC04-M5		M5	3.5	29	10	10
HDCB61-CPCVC04-M6	4	M6	4	30	10	10
HDCB61-CPCVC04-01		R1/8	7.5	25	10	10
HDCB61-CPCVC06-01		R1/8	7.5	26	12	12
HDCB61-CPCVC06-02	6	R1/4	9.5	33	12	14
HDCB61-CPCVC08-01		R1/8	7.5	28.5	14	14
HDCB61-CPCVC08-02	8	R1/4	9.5	34.8	14	14

型号	ΦD	R	L <sub>1</sub>	L <sub>2</sub>	ΦP	HA
HDCB61-CPCVC08-03	8	R3/8	10.5	34.8	14	
HDCB61-CPCVC10-02		R1/4	9.5	29.5		17
HDCB61-CPCVC10-03	10	R3/8	10.5	41	17	
HDCB61-CPCVC10-04		R1/2	13.5	43		
HDCB61-CPCVC12-02		R1/4	9.5	41		21
HDCB61-CPCVC12-03	12	R3/8	10.5	42.5	20	
HDCB61-CPCVC12-04		R1/2	13.5	44.5		

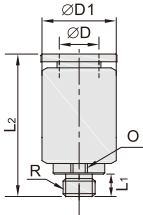
HDCB71-IPC 螺纹直通迷你型



型号	ΦD	R	L <sub>1</sub>	L <sub>2</sub>	HB	HA
HDCB71-IPC03-M3		M3×0.5	3.5	15	/	
HDCB71-IPC03-M5		M3×0.8	3.4	16		8
HDCB71-IPC03-M6	3	M6×1.0	4	16	2	
HDCB71-IPC03-01		R1/8	7.5	15		10
HDCB71-IPC03-G01		G1/8	5.5	14.6		14
HDCB71-IPC04-M3		M3×0.5	3.5	17.5	/	
HDCB71-IPC04-M5		M3×0.8	3.5	18.5		8
HDCB71-IPC04-M6	4	M6×1.0	4	19	2	
HDCB71-IPC04-G01C		R1/8	7.5	16		10

型号	ΦD	R	L <sub>1</sub>	L <sub>2</sub>	HB	HA
HDCB71-IPC04-G01		G1/8	5.5	15.2		14
HDCB71-IPC04-G02	4	G1/4	7.5	17.2	3	17
HDCB71-IPC06-M3		M3×0.5	3.5	18		
HDCB71-IPC06-M5		M3×0.8	3.5	18		2
HDCB71-IPC06-M6		M6×1.0	4	18.5		10
HDCB71-IPC06-01	6	R1/8	7.5	18.5		
HDCB71-IPC06-G01		G1/8	5	17.2	4	13
HDCB71-IPC06-G02		G1/4	7.5	18.5		17

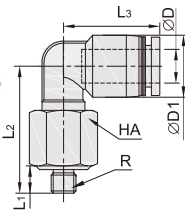
HDCB72-IPOC 圆螺纹一通迷你型



型号	ΦD	R	L <sub>1</sub>	L <sub>2</sub>	ΦD1	HB
HDCB72-IPOC03-M3		M3×0.5	3.5	15	6.5	
HDCB72-IPOC03-M5		M5×0.8	3.5	16	7	2
HDCB72-IPOC03-M6	3	M6×1.0	4	16	8	
HDCB72-IPOC03-G01		G1/8	5.5	14.6	14	
HDCB72-IPOC04-M3		M3×0.5	3.5	17.5		/
HDCB72-IPOC04-M5		M5×0.8	3.5	18		8
HDCB72-IPOC04-M6	4	M6×1.0	4	18.5		2
HDCB72-IPOC04-M7		M7×1.0	5.5	20		9
HDCB72-IPOC04-01		R1/8	7.5	15.5	10	3

型号	ΦD	R	L <sub>1</sub>	L <sub>2</sub>	ΦD1	HB
HDCB72-IPOC04-G01		G1/8	5.5	15.2	14	
HDCB72-IPOC04-G02	4	G1/4	7.5	17.2	17	3
HDCB72-IPOC06-M3		M3×0.5				/
HDCB72-IPOC06-M5		M5×0.8	3.5	18		2
HDCB72-IPOC06-M6		M6×1.0	4	18.5	10	
HDCB72-IPOC06-M7	6	M7×1.0	4.5	19.5		
HDCB72-IPOC06-01		R1/8	7.5	18.5		4
HDCB72-IPOC06-G01		G1/8	5.5	17.6	14	
HDCB72-IPOC06-G02		G1/4	7.5	18.5	17	

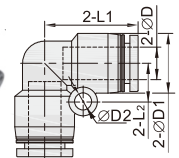
HDCB73-IPL L型螺纹弯头迷你型



型号	ΦD	R	L <sub>1</sub>	L <sub>2</sub>	L <sub>3</sub>	ΦD1	HA
HDCB73-IPL03-M3		M3×0.5	3.5	16			
HDCB73-IPL03-M5		M5×0.8					8
HDCB73-IPL03-M6	3	M6×1.0	4	16.5	12	7.5	
HDCB73-IPL03-01		R1/8	7.5	16.5			10
HDCB73-IPL03-G01		G1/8	5.5	16			14
HDCB73-IPL04-M3		M3×0.5	3.5	17.2			8
HDCB73-IPL04-M5	4	M5×0.8			14	9.5	
HDCB73-IPL04-M6		M6×1.0	4	17.6			10

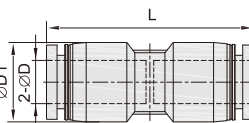
型号	ΦD	R	L <sub>1</sub>	L <sub>2</sub>	L <sub>3</sub>	ΦD1	HA
HDCB73-IPL04-01		R1/8	7.5	18			10
HDCB73-IPL04-G01	4	G1/8	5	16.5	14	9.5	13
HDCB73-IPL04-G02		G1/4	7.5	19.5			17
HDCB73-IPL06-M5		M5×0.8	3.5	17.2			8
HDCB73-IPL06-M6		M6×1.0	4	17.6			10
HDCB73-IPL06-01	6	R1/8	7.5	18	16	11.5	
HDCB73-IPL06-G01		G1/8	5	16.5			13
HDCB73-IPL06-G02		G1/4	7.5	19.5			17

HDCB74-IPV 塑料弯头迷你型



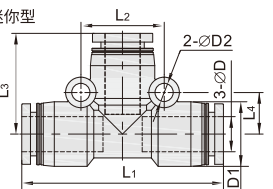
型号	ΦD	ΦD1	ΦD2	L <sub>1</sub>	L <sub>2</sub>
HDCB74-IPV03	3	7.5		12	4.8
HDCB74-IPV04	4	9.5	3.2	14.5	6
HDCB74-IPV06	6	11.5		16	6.5

HDCB75-IPU 塑料直通迷你型



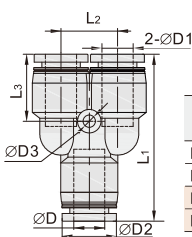
型号	ΦD	ΦD1	L
HDCB75-IPU03	3	7.5	21
HDCB75-IPU04	4	9.5	26.5
HDCB75-IPU06	6	11.5	27.5

HDCB76-IPE 塑料正三通迷你型



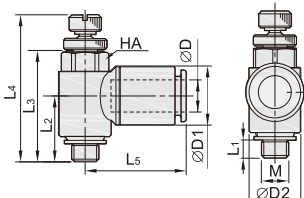
型号	ΦD	ΦD1	ΦD2	L <sub>1</sub>	L <sub>2</sub>	L <sub>3</sub>	L <sub>4</sub>	L <sub>5</sub>
HDCB76-IPE03	3	7.5		23.5	9.6	11.8	4.8	
HDCB76-IPE04	4	9.5	3.2	29	12	14.5	6	
HDCB76-IPE06	6	11.5		32	13	16	6.5	

HDCB77-IPY 塑料Y型迷你型



型号	ΦD	ΦD1	ΦD2	ΦD3	L <sub>1</sub>	L <sub>2</sub>	L <sub>3</sub>
HDCB77-IPY03	3	7.5			22.7	7.8	9.5
HDCB77-IPY04	4	9.5			28	9.2	
HDCB77-IPY06			3.2				12
HDCB77-IPY06-04	6	11.5			30	11	

HDCB78-ISC04 迷你节流阀



型号	ΦD	M	L <sub>1</sub>	L <sub>2</sub>	L <sub>3</sub>	
HDCB78-ISC04-M5	4	M5	3.2	12.2	20	
		L <sub>4</sub> (max)	L <sub>5</sub>	ΦD1	ΦD2	HA
		29	18	9.5	9.6	8