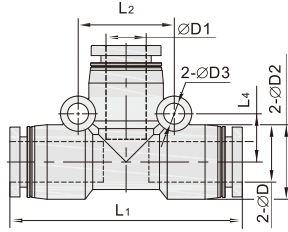


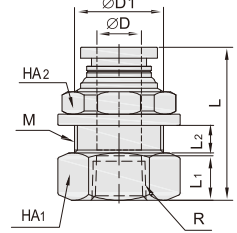
# 塑料气动接头

HDCA76-CPE塑料正三通



型号	ΦD	ΦD1	ΦD2	ΦD3	L1	L2	L3	L4
HDCA76-CPE04	4	11.5			38	14	19	7
HDCA76-CPE06	6	13.5	3.2		39	16	19.2	8
HDCA76-CPE08	8	15			45	19	22.5	9.5
HDCA76-CPE10	10	19	4.2		57	24	27.8	12
HDCA76-CPE12	12	21.5	4.3		59	26	29.5	13
HDCA76-CPE14	14	23.5	4.4			30		14
HDCA76-CPE16	16	26.5	4.5		64	33	32	15
HDCA76-CPE06-04-06	6	4	13.5		39	16	19.2	8
HDCA76-CPE08-04-08	8	4	15	3.2	45	19	22.5	9.5
HDCA76-CPE08-06-08	8	6	15	3.2	45	19	55.5	9.5
HDCA76-CPE10-06-10	10	6	19		57	24	26.3	12
HDCA76-CPE10-08-10	10	8	19	4.2	57	24	26.8	12
HDCA76-CPE12-08-12	12	8	21.5		59	26	28.5	13
HDCA76-CPE12-10-12	12	10	21.5	4.3	59	26	29.5	13
HDCA76-CPE14-12-14	14	12	23.5	4.4		30		14
HDCA76-CPE16-12-16	16	12	26.5	4.5	64	33	32	15
HDCA76-CPE16-14-16	16	14	26.5	4.5	64	33	32	15

HDCA91-CPMF隔板内螺纹直通

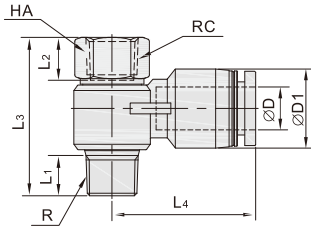


型号	ΦD	R	L	L1	L2	ΦD1	HA2	HA1	M
HDCA91-CPMF04-01	4	R1/8	24	8.5	6	10	14	14	M12×1
HDCA91-CPMF04-02	4	R1/4	26.5	11					
HDCA91-CPMF06-01	6	R1/8	24.8	8.5	7	12	17	17	M14×1
HDCA91-CPMF06-02	6	R1/4	29.5	11					
HDCA91-CPMF06-03	6	R3/8	30.5	12			21	21	
HDCA91-CPMF06-04	6	R1/2	33	14			24	24	
HDCA91-CPMF08-01	8	R1/8	26.5	8.5	7.5	14	19	19	M16×1
HDCA91-CPMF08-02	8	R1/4	32	11					
HDCA91-CPMF08-03	8	R3/8	34.3	12		14	21	19	
HDCA91-CPMF08-04	8	R1/2	36.5	14		14		19	M16×1
HDCA91-CPMF10-01	10	R1/8	30	8.5	9.5	17	24	24	M20×1
HDCA91-CPMF10-02	10	R1/4	32.5	11					
HDCA91-CPMF10-03	10	R3/8	34	12			24	24	
HDCA91-CPMF10-04	10	R1/2	38	14					
HDCA91-CPMF12-01	12	R1/8	31.5	8.5	10	20	26	26	M22×1
HDCA91-CPMF12-02	12	R1/4	34	11					
HDCA91-CPMF12-03	12	R3/8	35	12					
HDCA91-CPMF12-04	12	R1/2	37	14					

气动接头

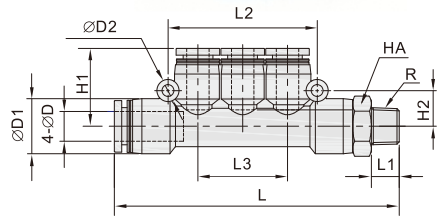
23

HDCB01-CPHF串联接头



型号	ΦD	R	L	L1	L2	L3	L4	ΦD1	HA
HDCB01-CPHF04-M5		M5	M5	3.5	5.5	20	20.5		8
HDCB01-CPHF04-01	4	R1/8	Rc1/8	7.5	8.5	29	23.5	11.5	14
HDCB01-CPHF04-02	4	R1/4	Rc1/4	9.5	11	35	25.5		17
HDCB01-CPHF06-M5		M5	M5	3.5	5.5	20	22		8
HDCB01-CPHF06-01	6	R1/8	Rc1/8	7.5	8.5	29	23.5	13.5	14
HDCB01-CPHF06-02	6	R1/4	Rc1/4	9.5	11	35	25.4		17
HDCB01-CPHF06-03	6	R3/8	Rc3/8	10.5	12	40	29.5		21
HDCB01-CPHF08-01	8	R1/8	Rc1/8	7.5	8.5	29	26.5	15	14
HDCB01-CPHF08-02	8	R1/4	Rc1/4	9.5	11	35	28.9		17
HDCB01-CPHF08-03	8	R3/8	Rc3/8	10.5	12	40	29.8		21
HDCB01-CPHF08-04	8	R1/2	Rc1/2	13.5	14	47.5	32.5		24
HDCB01-CPHF10-02	10	R1/4	Rc1/4	9.5	11	36	32.6	19	17
HDCB01-CPHF10-03	10	R3/8	Rc3/8	10.5	12	40	33		21
HDCB01-CPHF10-04	10	R1/2	Rc1/2	13.5	14	47.5	36		24
HDCB01-CPHF12-02	12	R1/4	Rc1/4	9.5	11	36	33.5		17
HDCB01-CPHF12-03	12	R3/8	Rc3/8	10.5	12	40	35.5	21.5	21
HDCB01-CPHF12-04	12	R1/2	Rc1/2	13.5	14	47.5	36.5		24

HDCB11-CPKD螺纹直通



型号	ΦD	R	L1	L	L2	L3	ΦD1	ΦD2	H1	H2	HA
HDCB11-CPKD04-M5		M5	3.5	66							10
HDCB11-CPKD04-01	4	R1/8	7.5	68.5			13		19		
HDCB11-CPKD04-02	4	R1/4	9.5	71.5							14
HDCB11-CPKD04-03	4	R3/8	10.5	72.5							17
HDCB11-CPKD06-M5		M5	3.5	67	42	26			9		10
HDCB11-CPKD06-01	6	R1/8	7.5	70							12
HDCB11-CPKD06-02	6	R1/4	9.5	72			14.5	3.2	20.5		14
HDCB11-CPKD06-03	6	R3/8	10.5	73							17
HDCB11-CPKD06-04	6	R1/2	13.5	76.5							21
HDCB11-CPKD08-01	8	R1/6	7.5	89							14
HDCB11-CPKD08-02	8	R1/4	9.5	91					24		
HDCB11-CPKD08-03	8	R3/8	10.5	92.5	48	29					17
HDCB11-CPKD08-04	8	R1/2	13.5	96							21
HDCB11-CPKD10-01	10	R1/8	7.5	100			18.4		11		
HDCB11-CPKD10-02	10	R1/4	9.5	102	60.8	36.8					17
HDCB11-CPKD10-03	10	R3/8	10.5	103							
HDCB11-CPKD10-04	10	R1/2	13.5	106.5							21