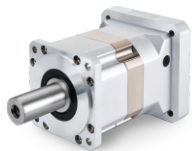


PLX系列减速机

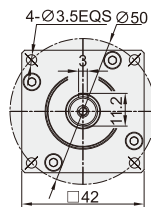
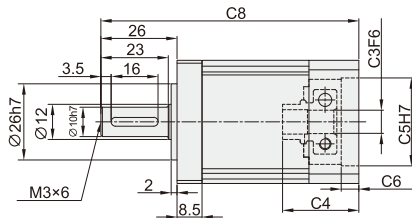
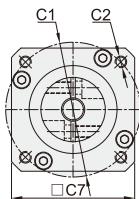


减速机核心特性:

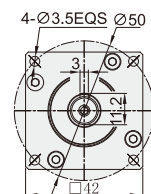
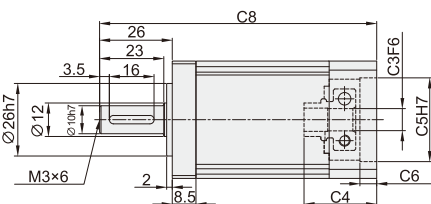
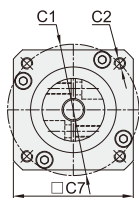
- ①采用直齿齿轮传动, 经渗碳淬火处理, 齿向齿廓修形处理, 确保运行平稳, 噪音小;
- ②结构简单, 可大批量生产, 且交货期快性价比高;
- ③减速机种类齐全, 可以满足市场上绝大多数减速机的配合。

| 代码 | 型号 |
|-------|--------|
| ZDX17 | PLX42 |
| | PLX142 |
| | PLX190 |
| | PLX242 |
| | PLX285 |
| | PLX330 |

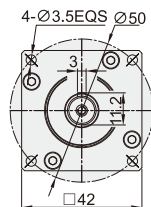
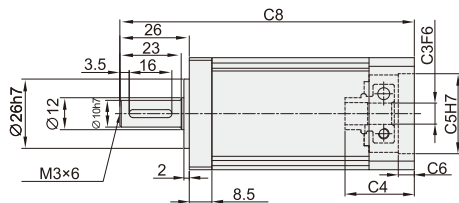
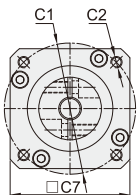
PLX42-L1



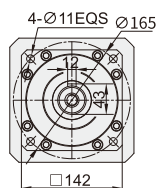
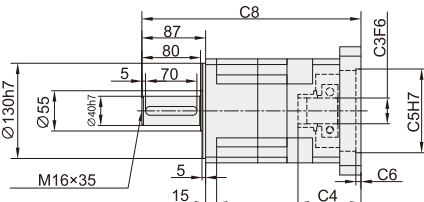
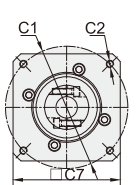
PLX42-L2



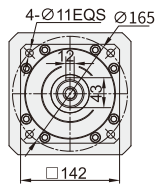
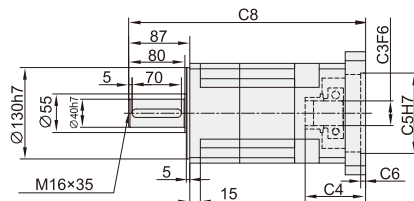
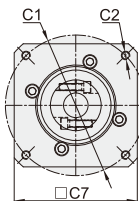
PLX42-L3



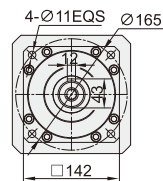
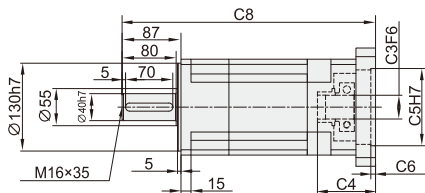
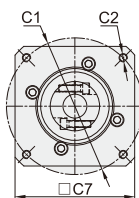
PLX142-L1



PLX142-L2

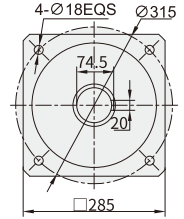
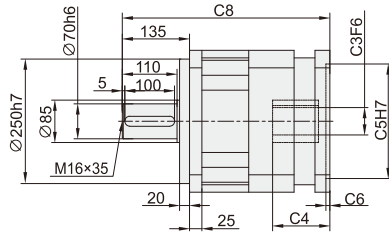
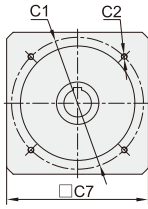


PLX142-L3

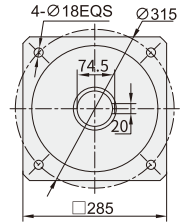
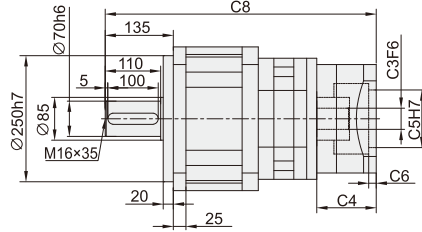
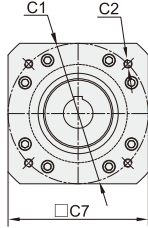


PLX系列减速机

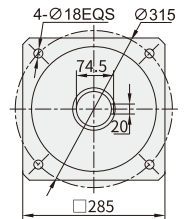
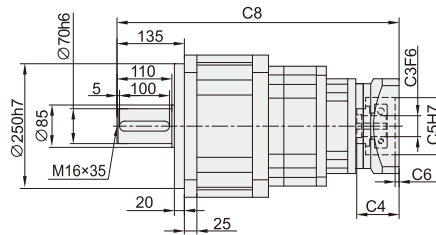
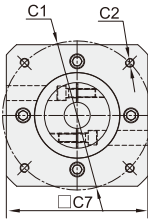
PLX285-L1



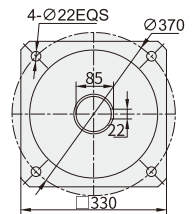
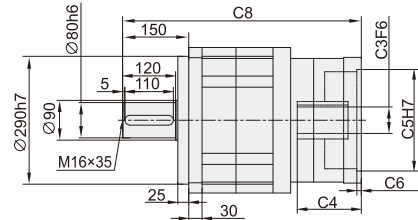
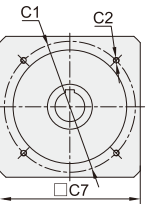
PLX285-L2



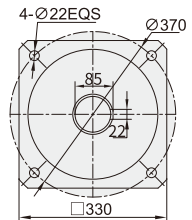
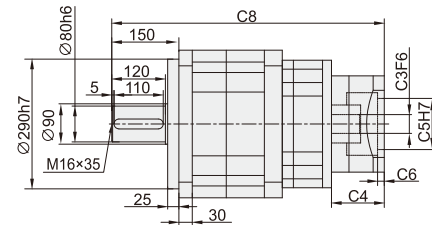
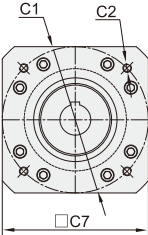
PLX285-L3



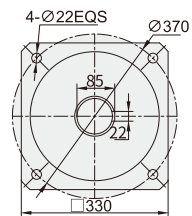
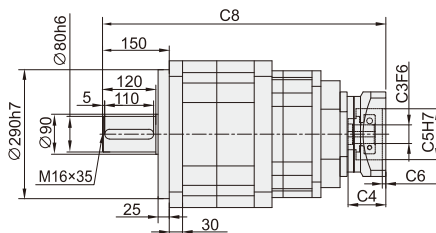
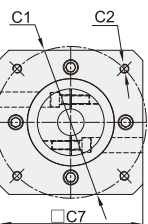
PLX330-L1



PLX330-L2



PLX330-L3



PLX系列减速机

| 尺寸 | M | C1 | C2 | C3 | C4 | C5 | C6 | C7 | C8 |
|------------------------|----|------|-------|---------|-----|--------|----|-----|-------|
| PLX42-L1 | M1 | Φ46 | 4-M4 | Φ8 | 26 | Φ30 | 6 | 42 | 88 |
| | M2 | Φ45 | 4-M3 | Φ8 | 26 | Φ30 | 6 | 42 | 88 |
| PLX42-L2 | M1 | Φ46 | 4-M4 | Φ8 | 26 | Φ30 | 6 | 42 | 99.2 |
| | M2 | Φ45 | 4-M3 | Φ8 | 26 | Φ30 | 6 | 42 | 99.2 |
| PLX42-L3 | M1 | Φ46 | 4-M4 | Φ8 | 26 | Φ30 | 6 | 42 | 110.4 |
| | M2 | Φ45 | 4-M3 | Φ8 | 26 | Φ30 | 6 | 42 | 110.4 |
| PLX142-L1 | M1 | Φ130 | 4-M8 | Φ22 | 62 | Φ95 | 7 | 142 | 275 |
| | M2 | Φ145 | 4-M8 | Φ22 | 62 | Φ110 | 7 | 142 | 275 |
| | M3 | Φ145 | 4-M8 | Φ24 | 62 | Φ110 | 7 | 142 | 275 |
| | M4 | Φ165 | 4-M10 | Φ32 | 62 | Φ130 | 7 | 142 | 275 |
| | M5 | Φ200 | 4-M12 | Φ35 | 86 | Φ114.3 | 7 | 175 | 299 |
| | M6 | Φ200 | 4-M12 | Φ35 | 117 | Φ114.3 | 7 | 175 | 330 |
| | M7 | Φ215 | 4-M12 | Φ38 | 86 | Φ180 | 7 | 190 | 299 |
| | M8 | Φ215 | 4-M12 | Φ42 | 86 | Φ180 | 7 | 190 | 299 |
| PLX142-L2 | M1 | Φ130 | 4-M8 | Φ22 | 62 | Φ95 | 7 | 142 | 313 |
| | M2 | Φ145 | 4-M8 | Φ22 | 62 | Φ110 | 7 | 142 | 313 |
| | M3 | Φ145 | 4-M8 | Φ24 | 62 | Φ110 | 7 | 142 | 313 |
| | M4 | Φ165 | 4-M10 | Φ32 | 62 | Φ130 | 7 | 142 | 313 |
| | M5 | Φ200 | 4-M12 | Φ35 | 86 | Φ114.3 | 7 | 175 | 337 |
| | M6 | Φ200 | 4-M12 | Φ35 | 117 | Φ114.3 | 7 | 175 | 368 |
| | M7 | Φ215 | 4-M12 | Φ38 | 86 | Φ180 | 7 | 190 | 337 |
| | M8 | Φ215 | 4-M12 | Φ42 | 86 | Φ180 | 7 | 190 | 337 |
| PLX142-L3 | M1 | Φ130 | 4-M8 | Φ22 | 62 | Φ95 | 7 | 142 | 351 |
| | M2 | Φ145 | 4-M8 | Φ22 | 62 | Φ110 | 7 | 142 | 351 |
| | M3 | Φ145 | 4-M8 | Φ24 | 62 | Φ110 | 7 | 142 | 351 |
| | M4 | Φ165 | 4-M10 | Φ32 | 62 | Φ130 | 7 | 142 | 351 |
| | M5 | Φ200 | 4-M12 | Φ35 | 86 | Φ114.3 | 7 | 175 | 375 |
| | M6 | Φ200 | 4-M12 | Φ35 | 117 | Φ114.3 | 7 | 175 | 406 |
| | M7 | Φ215 | 4-M12 | Φ38 | 86 | Φ180 | 7 | 190 | 375 |
| | M8 | Φ215 | 4-M12 | Φ42 | 86 | Φ180 | 7 | 190 | 375 |
| PLX190-L1 | M1 | Φ215 | 4-M12 | Φ38/Φ42 | 85 | Φ180 | 7 | 150 | 159.5 |
| | M2 | Φ200 | 4-M12 | Φ35 | 115 | Φ114.3 | 7 | 150 | 159.5 |
| | M3 | Φ235 | 4-M12 | Φ38/Φ42 | 120 | Φ200 | 7 | 150 | 184.5 |
| | M4 | Φ200 | 4-M12 | Φ35 | 85 | Φ114.3 | 7 | 180 | 184.5 |
| PLX190-L2 PLX190-L3 | M1 | Φ130 | 4-M8 | Φ22 | 62 | Φ95 | 7 | 142 | 351 |
| | M2 | Φ145 | 4-M8 | Φ22/Φ24 | 62 | Φ110 | 7 | 142 | 351 |
| | M3 | Φ165 | 4-M10 | Φ32 | 62 | Φ130 | 7 | 142 | 351 |
| | M4 | Φ200 | 4-M12 | Φ35 | 86 | Φ114.3 | 7 | 175 | 375 |
| | M5 | Φ200 | 4-M12 | Φ35 | 117 | Φ114.3 | 7 | 175 | 406 |
| | M6 | Φ215 | 4-M12 | Φ38/Φ42 | 86 | Φ180 | 7 | 190 | 375 |
| PLX242-L1 | M1 | Φ200 | 4-M12 | Φ42 | 118 | Φ114.3 | 15 | 220 | 392 |
| | M2 | Φ235 | 4-M12 | Φ42 | 118 | Φ200 | 15 | 220 | 392 |
| PLX242-L2 | M1 | Φ215 | 4-M12 | Φ38/Φ42 | 85 | Φ180 | 7 | 150 | 420 |
| | M2 | Φ200 | 4-M12 | Φ35 | 115 | Φ114.3 | 7 | 150 | 450 |
| | M3 | Φ235 | 4-M12 | Φ38/Φ42 | 120 | Φ200 | 7 | 150 | 455 |
| | M4 | Φ200 | 4-M12 | Φ35 | 85 | Φ114.3 | 7 | 180 | 420 |
| PLX242-L3 | M1 | Φ130 | 4-M8 | Φ22 | 62 | Φ95 | 7 | 142 | 437 |
| | M2 | Φ145 | 4-M8 | Φ22/Φ24 | 62 | Φ110 | 7 | 142 | 437 |
| | M3 | Φ165 | 4-M10 | Φ32 | 62 | Φ130 | 7 | 142 | 437 |
| | M4 | Φ200 | 4-M12 | Φ35 | 86 | Φ114.3 | 7 | 175 | 461 |
| | M5 | Φ200 | 4-M12 | Φ35 | 117 | Φ114.3 | 7 | 175 | 492 |
| PLX285-L1 | M1 | Φ235 | 4-M12 | Φ55 | 115 | Φ200 | 7 | 285 | 417 |
| PLX285-L2 | M1 | Φ200 | 4-M12 | Φ42 | 118 | Φ114.3 | 15 | 220 | 537.5 |
| | M2 | Φ235 | 4-M12 | Φ42 | 118 | Φ200 | 15 | 220 | 537.5 |

PLX系列减速机

| 尺寸 | M | C1 | C2 | C3 | C4 | C5 | C6 | C7 | C8 |
|-----------|----|------|-------|---------|-----|--------|----|-----|-------|
| PLX285-L3 | M1 | φ215 | 4-M12 | φ38/φ42 | 85 | φ180 | 7 | 150 | 565.5 |
| | M2 | φ200 | 4-M12 | φ35 | 115 | φ114.3 | 7 | 150 | 595.5 |
| | M3 | φ235 | 4-M12 | φ38/φ42 | 120 | φ200 | 7 | 150 | 600.5 |
| | M4 | φ200 | 4-M12 | φ35 | 85 | φ114.3 | 7 | 180 | 565.5 |

| 尺寸 | M | C1 | C2 | C3 | C4 | C5 | C6 | C7 | C8 |
|-----------|----|------|-------|-----|-----|--------|----|-----|-----|
| PLX330-L1 | M1 | φ265 | 4-M12 | φ60 | 145 | φ230 | 10 | 150 | 541 |
| PLX330-L2 | M1 | φ200 | 4-M12 | φ42 | 118 | φ114.3 | 15 | 220 | 609 |
| | M2 | φ235 | 4-M12 | φ42 | 118 | φ200 | 15 | 220 | 609 |

| 尺寸 | M | C1 | C2 | C3 | C4 | C5 | C6 | C7 | C8 |
|-----------|----|------|-------|---------|-----|--------|----|-----|-----|
| PLX330-L3 | M1 | φ215 | 4-M12 | φ38/φ42 | 85 | φ180 | 7 | 150 | 637 |
| | M2 | φ200 | 4-M12 | φ35 | 115 | φ114.3 | 7 | 150 | 667 |
| | M3 | φ235 | 4-M12 | φ38/φ42 | 120 | φ200 | 7 | 150 | 673 |
| | M4 | φ200 | 4-M12 | φ35 | 85 | φ114.3 | 7 | 180 | 637 |

| 型号 | 单位 | PLX042 | PLX142 | PLX190 | 减速比 | 阶段 |
|--------|-------------------|----------|--------|--------|---------|----|
| 额定输出扭矩 | N.m | 8 | 310 | — | 3 | 1 |
| | | 9 | 605 | 1780 | 4 | |
| | | 9 | 420 | 1345 | 5 | |
| | | 7 | 270 | 745 | 8 | |
| | | — | 680 | 2035 | 12 | 2 |
| | | 12 | 680 | 2035 | 16 | |
| | | 12 | 680 | 2035 | 20 | |
| | | 10.5 | 460 | 1485 | 25 | |
| | | 12 | 680 | 2035 | 32 | 3 |
| | | 10.5 | 460 | 1485 | 40 | |
| | | 8 | 310 | 840 | 64 | |
| | | 15.5 | 900 | 2035 | 64 | |
| | | 15.5 | 900 | 2590 | 80 | |
| | | 15.5 | 900 | 2590 | 100 | |
| | | 15.5 | 580 | 1855 | 125 | |
| | | 15.5 | 580 | 2590 | 160 | |
| | | 13.5 | 580 | 1855 | 200 | |
| | | 15.5 | 900 | 2590 | 256 | |
| | | 13.5 | 580 | 1855 | 320 | |
| | | 9.5 | 400 | 1070 | 512 | |
| 故障停滞扭矩 | N.m | 2倍额定输出扭矩 | | | | |
| 额定输入转速 | rmp | 3000 | 2000 | 1500 | | |
| 最大输入转速 | rmp | 6000 | 3500 | 2500 | | |
| 最大径向力 | N | 185 | 3200 | 13000 | | |
| 最大轴向力 | N | 150 | 3000 | 20000 | | |
| 效率 | % | 单一[97%] | | | 双倍[95%] | |
| 平均寿命 | h | 20000 | | | | |
| 重量 | kg | 0.5 | 17 | 42 | | 1 |
| | | 0.6 | 23 | 50 | | 2 |
| | | 0.7 | 29 | 58 | | 3 |
| 转动惯量 | kgcm ² | 0.022 | 4.31 | — | 3 | 1 |
| | | 0.022 | 5.15 | 15.6 | 4 | |
| | | 0.019 | 4.93 | 15.6 | 5 | |
| | | 0.017 | 4.84 | 15.6 | 8 | |
| | | — | 6.31 | 6.31 | 12 | 2 |
| | | 0.022 | 5.15 | 5.15 | 16 | |
| | | 0.019 | 4.93 | 4.93 | 20 | |
| | | 0.019 | 4.93 | 4.93 | 25 | |
| | | 0.017 | 4.84 | 4.84 | 32 | 3 |
| | | 0.016 | 4.84 | 4.84 | 40 | |
| | | 0.016 | 4.84 | 4.84 | 64 | |
| | | 0.019 | 4.93 | 4.93 | 64 | |
| | | 0.019 | 4.93 | 4.93 | 80 | |
| | | 0.019 | 4.93 | 4.93 | 100 | |
| | | 0.029 | 4.84 | 4.84 | 125 | |
| | | 0.016 | 4.84 | 4.84 | 160 | |
| | | 0.016 | 4.84 | 4.84 | 200 | |
| | | 0.016 | 4.84 | 4.84 | 256 | |
| | | 0.016 | 4.84 | 4.84 | 320 | |
| | | 0.016 | 4.84 | 4.84 | 512 | |
| 噪音 | dB | 60 | 70 | 70 | | |
| 润滑 | | 合成油脂润滑 | | | | |
| 防护等级 | | Ip65 | | | | |

PLX系列减速机

| 型号 | 单位 | PLX242 | PLX285 | PLX330 | 减速比 | 阶段 |
|--------|-------------------|----------|--------|--------|---------|----|
| 额定输出扭矩 | N.m | 3200 | 5800 | 10190 | 4 | L1 |
| | | 2500 | 4400 | 7180 | 5 | |
| | | 1360 | 2595 | 4080 | 8 | |
| | | 3390 | 6400 | 10800 | 16 | L2 |
| | | 3390 | 6400 | 10800 | 20 | |
| | | 2650 | 4710 | 7550 | 25 | |
| | | 3390 | 6400 | 10800 | 32 | |
| | | 2650 | 4710 | 7550 | 40 | |
| | | 1450 | 4710 | 4430 | 64 | |
| | | 3390 | 8130 | 13700 | 64 | L3 |
| | | 4420 | 8130 | 13700 | 80 | |
| | | 3420 | 9130 | 13700 | 100 | |
| | | 3420 | 6030 | 9800 | 125 | |
| | | 4420 | 8130 | 13700 | 160 | |
| | | 3420 | 6030 | 9800 | 200 | |
| | | 4420 | 6030 | 9800 | 256 | |
| | | 3420 | 6030 | 9800 | 320 | |
| | | 1840 | 3560 | 8450 | 512 | |
| 故障停滞扭矩 | N.m | 2倍额定输出扭矩 | | | | |
| 额定输入转速 | rmp | 1000 | 1000 | 1000 | / | |
| 最大输入转速 | rmp | 1500 | 1500 | 1500 | | |
| 最大径向力 | N | 12000 | 15000 | 17000 | | |
| 最大轴向力 | N | 6400 | 12000 | 15000 | | |
| 效率 | % | 单一[97%] | | | 双倍[95%] | |
| 平均寿命 | h | 20000 | | | | |
| 重量 | kg | 71 | 113 | 245 | / | 1 |
| | | 75 | 136 | 290 | / | 2 |
| | | 92 | 140 | 326 | / | 3 |
| 转动惯量 | kgcm ² | 34.6 | 34.5 | 65.4 | 4 | 1 |
| | | 34.6 | 34.5 | 65.4 | 5 | |
| | | 34.6 | 34.5 | 65.4 | 8 | |
| | | 15.6 | 38.5 | 68.5 | 16 | 2 |
| | | 15.6 | 38.5 | 68.5 | 20 | |
| | | 15.6 | 38.5 | 68.5 | 25 | |
| | | 15.6 | 38.5 | 68.5 | 32 | |
| | | 15.6 | 38.5 | 68.5 | 40 | |
| | | 15.6 | 38.5 | 68.5 | 64 | |
| | | 15.6 | 38.5 | 73.4 | 64 | 3 |
| | | 15.6 | 38.5 | 73.4 | 80 | |
| | | 15.6 | 38.5 | 73.4 | 100 | |
| | | 15.6 | 38.5 | 73.4 | 125 | |
| | | 15.6 | 38.5 | 73.4 | 160 | |
| | | 15.6 | 38.5 | 73.4 | 200 | |
| | | 15.6 | 38.5 | 73.4 | 256 | |
| | | 15.6 | 38.5 | 73.4 | 320 | |
| | | 15.6 | 38.5 | 73.4 | 512 | |
| 噪音 | dB | 70 | 70 | 70 | | |
| 润滑 | | 合成油脂润滑 | | | | |
| 防护等级 | | Ip65 | | | | |



请按图示订货

■ ZDX17-PLX42-L1-8-S2-M1

| 代码 | 减速机系列名称 | 减速比 | 输出方式 | 电机尺寸 | 可选 |
|-------|----------|-----|-----------------------|-------|--------------|
| ZDX17 | PLX42-L1 | 8 | S1:无输出轴键 S2:附带输出轴键 | M1 M2 | T:输入端 开键槽 |



交期Delivery

3天

发货

○本产品发货时间不含周日

减
速
机

07



www.vipdo.cn 400-098-1117

工厂自动化零件一站式采购平台

汇集国内外知名品牌, 让采购更便捷, 让设计更高效!

P372