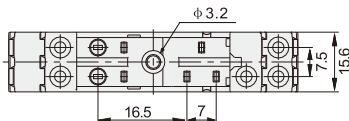
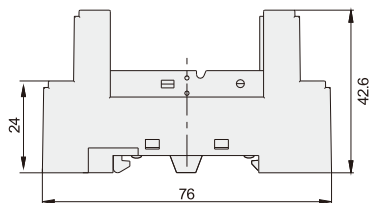


# 欧规继电器底座

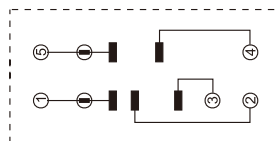


代码	规格	额定电流
JDUB21	14F-1Z-C2	12A
	14F-2Z-C2	10A
	14F-1Z-C5	15A

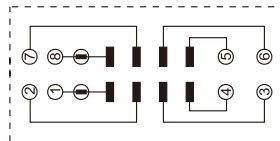
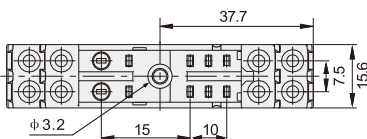
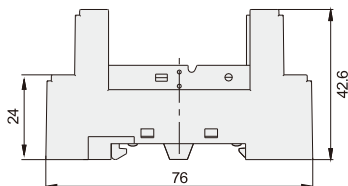
外形及安装尺寸  
14F-1Z-C2



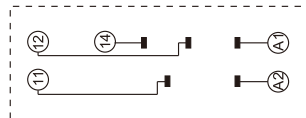
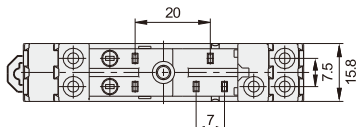
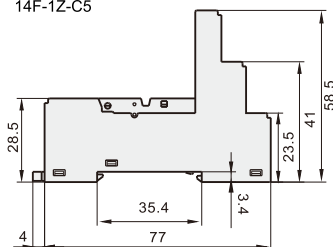
接线图



14F-2Z-C2



14F-1Z-C5



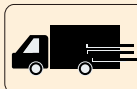
代码	JDUB21		
产品型号	14F-1Z-C2	14F-2Z-C2	14F-1Z-C5
工作负载	电流	12A	10A
	电压	300VAC	300VAC
绝缘电压	3500V/S	3500V/S	3500V/S
使用环境	-35°C~+70°C	-35°C~+70°C	-35°C~+70°C
螺丝大小	M3	M3	M3
插拔寿命	1×10 <sup>4</sup>	1×10 <sup>4</sup>	1×10 <sup>4</sup>
适用电线	min.0.5mm <sup>2</sup> /max.2.5mm <sup>2</sup>	min.0.5mm <sup>2</sup> /max.2.5mm <sup>2</sup>	min.0.5mm <sup>2</sup> /max.2.5mm <sup>2</sup>
外壳塑料	阻燃环保尼龙PA66+GF20	阻燃环保尼龙PA66+GF20	阻燃环保尼龙PA66+GF20



请按图示订货

## JDUB21-14F-1Z-C2

代码	产品型号
JDUB21	14F-1Z-C2



交期Delivery

5天

发货

○本产品发货时间不含周日