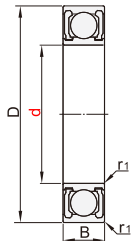


# 深沟球轴承 ◀ 非接触式/接触式 带橡胶密封圈

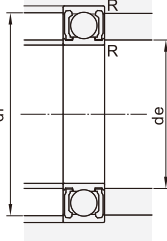


代码	类别	轴承类别代码	密封类型-后置代码		轴承材质	轴承精度
BK	标准型	6	双面非接触式橡胶密封圈	2RZ	SUJ2	GB/T307P0
			双面接触式橡胶密封圈	2RS		

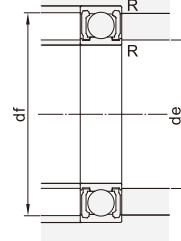
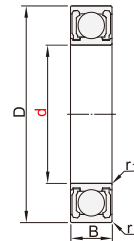
非接触式橡胶密封圈型 (安装图)



(安装图)



接触式橡胶密封圈型 (安装图)



轴承型号		d	D	B	r1(min)	基本额定负载		容许转速rpm (参考)	安装尺寸				重量 (9)
非接触式橡胶密封圈型	接触式橡胶密封圈型					Cr(动)	C0(静)		de(min)	de(max)	df(max)	R(max)	
BK6800-2RZ	BK6800-2RS	19	5		0.3	1.72	0.84	24000	12	12	17	0.3	5
BK6900-2RZ	BK6900-2RS	22	6			2.7	1.27	22000		20	9		
BK6000-2RZ	BK6000-2RS	26	8			4.55	1.96	22000		12.5	18		
BK6200-2RZ	BK6200-2RS	30	9		0.6	5.1	2.39	18000	14	16	26	0.6	32
BK6300-2RZ	BK6300-2RS	35	11			8.1	3.45	17000		16.5	52		
BK6801-2RZ	BK6801-2RS	21	5			1.92	1.04	20000		14	10		
BK6901-2RZ	BK6901-2RS	24	6		0.3	2.89	1.46	20000	16	14.5	22	0.3	10
BK6001-2RZ	BK6001-2RS	28	8			5.1	2.37	18000		15.5	22		
BK6201-2RZ	BK6201-2RS	32	10			6.1	2.75	17000		17	37		
BK6301-2RZ	BK6301-2RS	37	12	1	9.7	4.2	16000	18	60				
BK6802-2RZ	BK6802-2RS	24	5		0.3	2.07	1.26	17000	17	22	0.3	15	
BK6902-2RZ	BK6902-2RS	28	7			3.65	2	17000		17		15	
BK6002-2RZ	BK6002-2RS	32	9			5.6	2.83	15000		19		31	
BK6202-2RZ	BK6202-2RS	35	11	0.6	7.65	3.6	14000	19	45				
BK6302-2RZ	BK6302-2RS	42	13	1	11.4	5.45	13000	20	83				
BK6803-2RZ	BK6803-2RS	26	5		0.3	2.63	1.57	15000	19	19	0.3	19	
BK6903-2RZ	BK6903-2RS	30	7			4.6	2.55	15000		19.5		19	
BK6003-2RZ	BK6003-2RS	35	10			6	3.25	13000		21.5		41	
BK6203-2RZ	BK6203-2RS	40	12	0.6	9.55	4.6	12000	21	67				
BK6303-2RZ	BK6303-2RS	47	14	1	13.6	6.65	11000	25.5	113				
BK6804-2RZ	BK6804-2RS	32	7		0.3	4	2.47	13000	22	22	0.3	17	
BK6904-2RZ	BK6904-2RS	37	9			6.4	3.7	12000		24		37	
BK6004-2RZ	BK6004-2RS	42	12	0.6		9.4	5	11000		24		68	
BK6204-2RZ	BK6204-2RS	47	14	1.00	12.8	6.6	11000	25	107				
BK6304-2RZ	BK6304-2RS	52	15	1.1	15.9	7.9	11000	26.5	145				
BK6805-2RZ	BK6805-2RS	37	7		0.3	4.5	3.15	10000	27	27	0.3	21	
BK6905-2RZ	BK6905-2RS	42	9			7.05	4.55	10000		28.5		42	
BK6005-2RZ	BK6005-2RS	47	12	0.6		10.1	5.85	9500		29		79	
BK6205-2RZ	BK6205-2RS	52	15	1.00	14	7.85	9000	30	129				
BK6305-2RZ	BK6305-2RS	62	17	1.1	20.6	11.2	8000	31.5	235				
BK6806-2RZ	BK6806-2RS	42	7		0.3	4.7	3.65	9000	32	32	0.3	24	
BK6906-2RZ	BK6906-2RS	47	9			7.25	5	8500		34		52	
BK6006-2RZ	BK6006-2RS	55	13			13.2	8.3	8000		36.5		116	
BK6206-2RZ	BK6206-2RS	62	16	1	19.5	11.3	7500	38.5	199				
BK6907-2RZ	BK6907-2RS	55	10	0.6	10.6	7.25	7500	39	75				
BK6007-2RZ	BK6007-2RS	62	14	1	16	10.3	6700	40	151				
BK6207-2RZ	BK6207-2RS	72	17	1.1	25.7	15.3	6300	41.5	284				
BK6307-2RZ	BK6307-2RS	80	21	1.5	33.5	19.2	6000	43	464				
BK6908-2RZ	BK6908-2RS	62	12	0.6	13.7	10	6300	44	112				
BK6008-2RZ	BK6008-2RS	68	15	1	16.8	11.5	6000	45	190				
BK6208-2RZ	BK6208-2RS	80	18	1.1	29.1	17.9	5600	46.5	366				
BK6909-2RZ	BK6909-2RS	68	12	0.6	14.1	10.9	5600	49	126				
BK6009-2RZ	BK6009-2RS	75	16	1	20.9	15.2	5300	50	241				
BK6209-2RZ	BK6209-2RS	85	19	1.1	31.5	20.4	5300	51.5	420				
BK6910-2RZ	BK6910-2RS	72	12	0.6	14.5	11.7	5300	54	135				
BK6010-2RZ	BK6010-2RS	80	16	1	21.8	16.6	4800	55	261				
BK6210-2RZ	BK6210-2RS	90	20	1.1	35	23.2	4800	56.5	459				



请按图示订货

## ■ BK-6800-2RZ

代码	规格	密封型式	d	D
BK	6800	2RZ	10	19



交期Delivery

**2天** 发货

○本产品发货时间不含周日

轴承/关节轴承 27