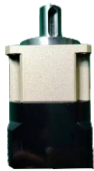
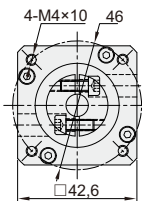
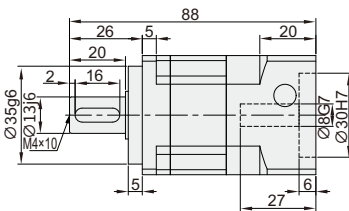
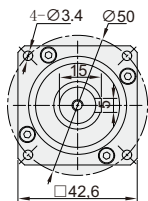


ZCA系列减速机

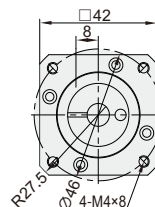
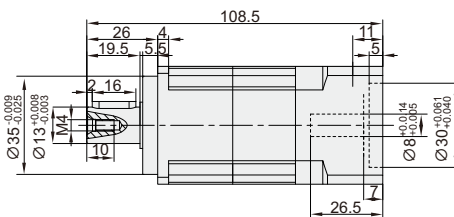
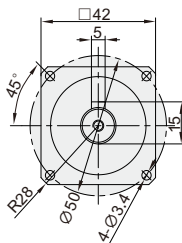


代码	型号
ZDX19	ZCA40
	ZCAR40

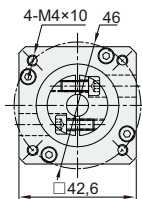
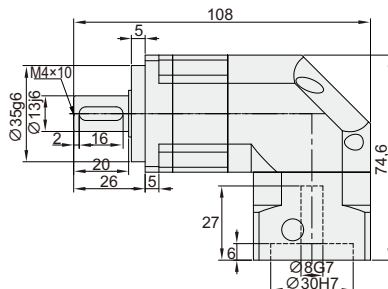
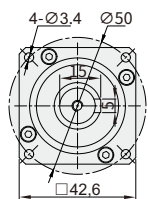
ZCA40-L1



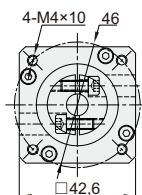
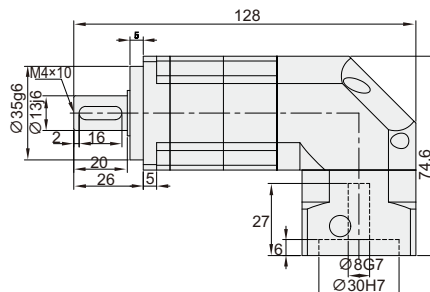
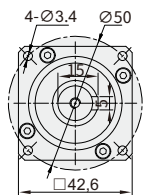
ZCA40-L2



ZCAR40-L1



ZCAR40-L2



ZCA系列减速机

尺寸	M	C1	C2	C3	C4	C5	C6	C7	C8
ZCA40-L1	M1	φ46	4-M4	φ8	27	φ30	6	42.6	88
	M2	φ45	4-M3	φ8	27	φ30	6	42.6	88
ZCA40-L2	M1	φ46	4-M4	φ8	27	φ30	6	42.6	108.5
	M2	φ45	4-M3	φ8	27	φ30	6	42.6	108.5

尺寸	M	C1	C2	C3	C4	C5	C6	C7	C8
ZCAR40-L1	M1	φ46	4-M4	φ8	27	φ30	6	42.6	108
	M2	φ45	4-M3	φ8	27	φ30	6	42.6	108
ZCAR40-L2	M1	φ46	4-M4	φ8	27	φ30	6	42.6	128
	M2	φ45	4-M3	φ8	27	φ30	6	42.6	128

型号	单位	ZCA40	ZCAR40	减速比	阶段
额定输出扭矩	N.m	14	14	3	1
		19	19	4	
		20	20	5	
		20	20	7	
		19	19	10	
		-	19	12	
		-	19	15	2
		19	20	16	
		19	20	20	
		22	20	25	
		-	19	28	
		-	19	30	
		-	20	35	
		17	20	40	
		22	20	50	
		-	19	70	
故障停滞扭矩	N.m	2.5倍额定输出扭矩			
额定输入转速	rpm	3000	3000		
最大径向力	N	920	700		
最大轴向力	N	630	610		
效率	%	单一[95%]	双倍[94%]		
平均寿命	h	30000	30000		
回程间隙	arcmin	3~5	5~7	L1-P2	
		6~8	8~10	L2-P2	
噪音	dB	56	62		
润滑		合成油脂润滑			
防护等级		Ip65			

注：1.1输出转速为100rpm时，作用于输出轴中心位置。2. L1为1段速比，L2为2段速比。3.如需其他电机安装尺寸可与我司联系。



请按图示订货

■ ZDX19-ZCA40-L2-10-S2-P2-M1-T

代码	减速机系列名称	减速比	输出方式	精度	电机尺寸	可选
ZDX19	ZCA40-L2	10	S1:无输出轴键 S2:附带输出轴键	P2	M1 M2	T:输入端 开键槽



交期Delivery

3 天 发货

○本产品发货时间不含周日



www.vipdo.cn



400-098-1117

工厂自动化零件一站式采购平台

汇集国内外知名品牌，让采购更便捷，让设计更高效！